



Complete Streets: 101



AMERICANS WANT TO WALK AND BIKE MORE

*52% of Americans want
to bike more than
they do now.*

*55% of Americans would
prefer to drive less
and walk more.*

ABOUT 1/3 OF AMERICANS DO NOT DRIVE

- *21% of Americans over 65.*
- *All children under 16.*
- *Many low income Americans who cannot afford automobiles.*

KEY POINTS

- *When streets are designed only for cars, they deny people the opportunity to choose more active ways to get around, such as walking and biking.*
- *Even where sidewalks exist, large intersections and speeding traffic may make walking unpleasant or even unsafe – discouraging any non-motorized travel.*





WHAT ARE COMPLETE STREETS?

Complete Streets are designed and operated so they are safe, comfortable, and convenient for all users – pedestrians, bicyclists, motorists and transit riders of all ages and abilities.

**COMPLETE
STREETS
COMPONENTS**











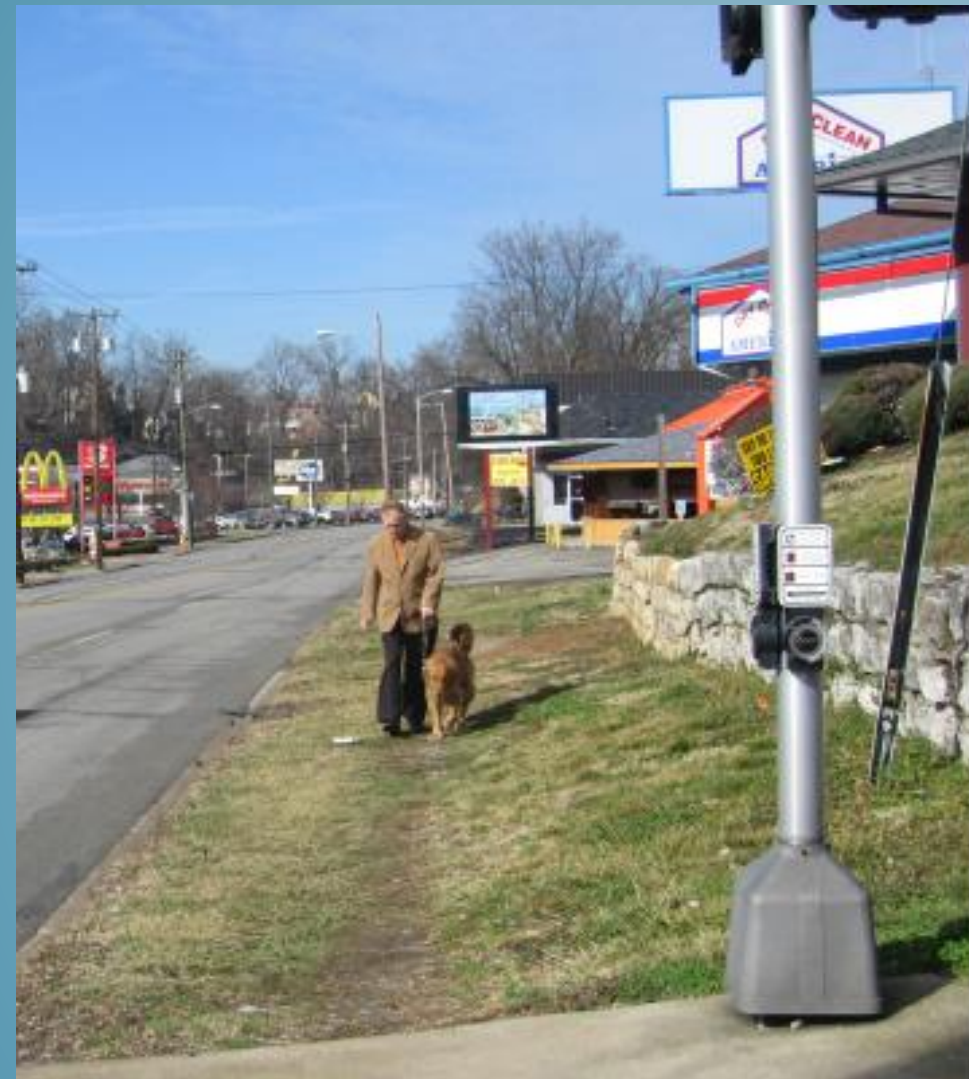
**BEFORE AND
AFTER**















PROJECT BACKGROUND

- *2007 – Comprehensive Plan call for enhanced transportation policy regarding biking and walking*
- *2009 – Downtown Action Plan is developed and highlights the need for greater pedestrian connectivity*
- *2010 – Complete Streets Resolution establishes commitment of city to develop implementation strategies*
- *2011 – City Council Adopts Bicycle and Pedestrian Master Plan.*
- *2013 – Live Healthy Red Wing receives grant from Blue Cross Blue Shield to incorporate plan into city policy.*

**COMPLETE
STREETS POLICY
IMPLEMENTATION
STRATEGIES
COMPLETED TO
DATE**

- *Include cost estimates due to Complete Streets policies and how the project meets the Complete streets policies when Engineering Department drafts feasibility reports*
- *Planning Department shall complete and inventory of the pedestrian and bicycling facility infrastructure.*
- *Planning Commission shall draft a Master Bicycle and Pedestrian Plan*

**COMPLETE
STREETS POLICY
IMPLEMENTATION
STRATEGIES
TO BE COMPLETED**

- *Evaluate and revise transportation design manuals.*
- *Evaluate and revise City Subdivision Code .*
- *Evaluate and revise City Assessment Policies.*
- *Evaluate existing adopted transportation plans to consider their compatibility with the Complete Streets Policy*
- *Assemble a committee to develop priorities for infrastructure improvements (sidewalks, bikeways, etc.)*

BICYCLE AND PEDESTRIAN MASTER PLAN ACTION PLAN

- *Safer Crossings*
 - *Ensuring bicyclists and pedestrians can safely and easily cross the street will lessen the impact of barriers such as highways and increase connectivity*
- *Fill in Gaps*
 - *Linking gaps in the system will allow for greater connectivity and connections from neighborhoods to and among activity centers*

ACTION PLAN CONTINUED

- *Develop an on-street bicycle network*
 - *Implementation should be done incrementally following priorities established in plan.*

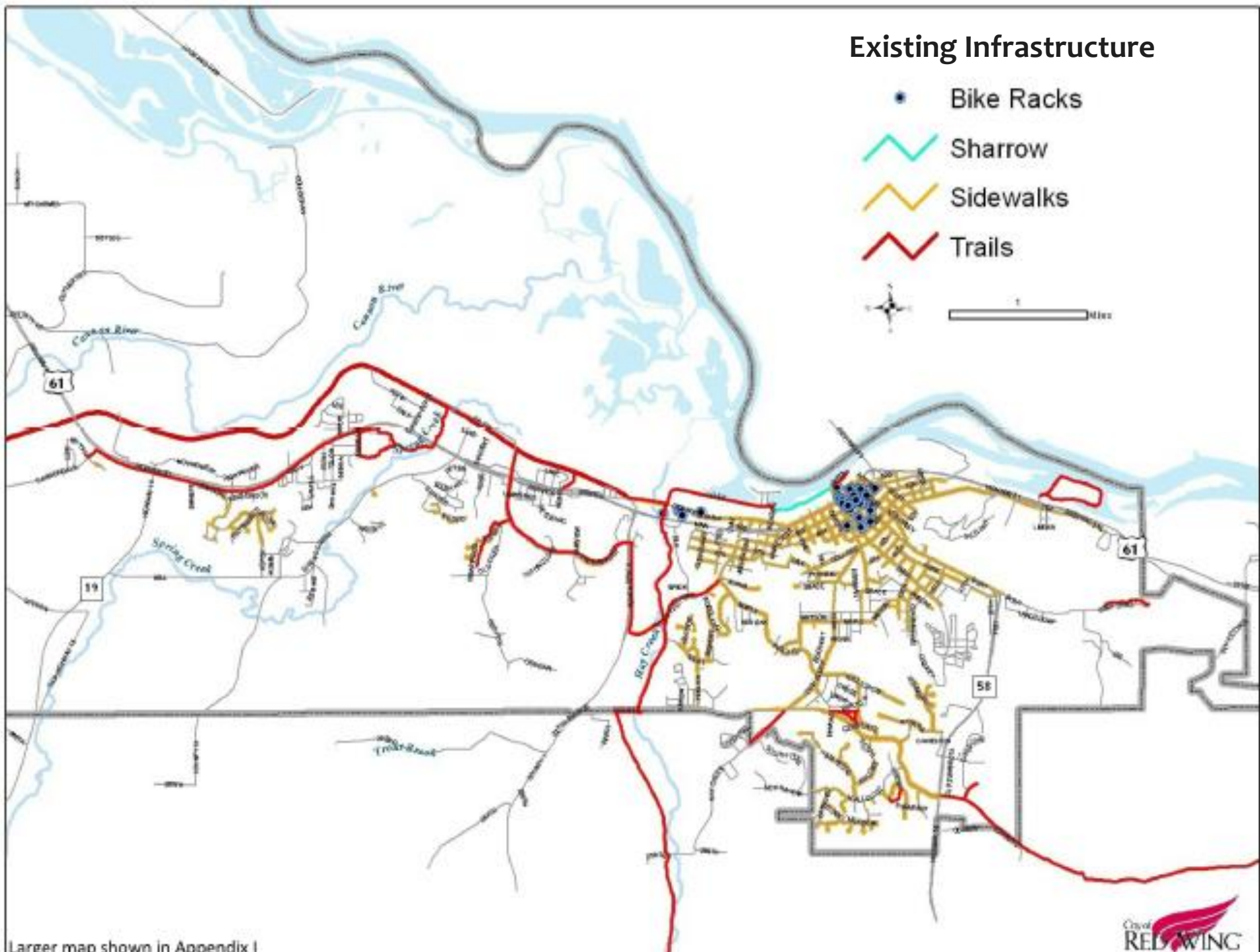
Existing Infrastructure

• Bike Racks

∩ Sharrow

∩ Sidewalks

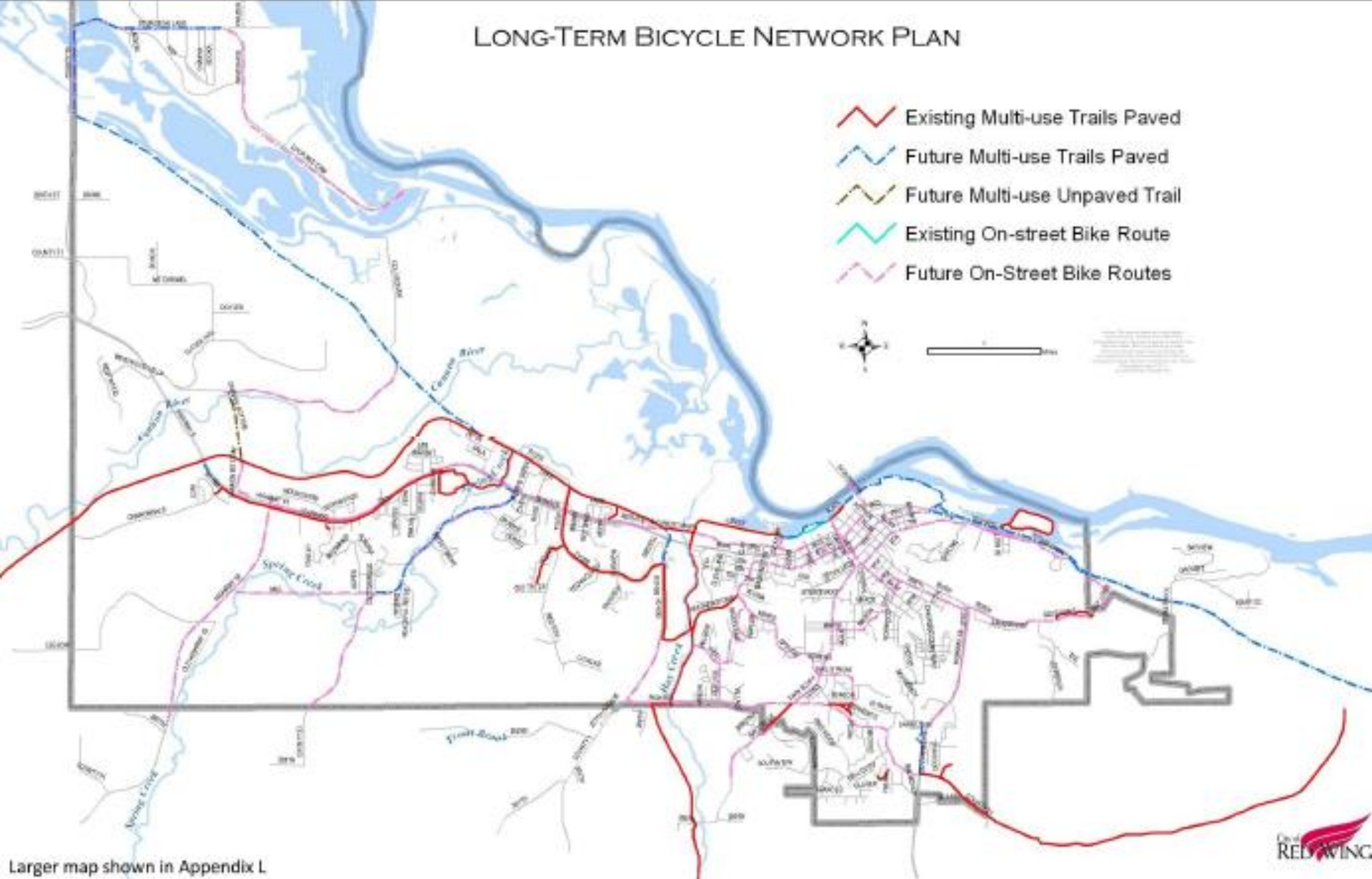
∩ Trails



Larger map shown in Appendix I

LONG-TERM BICYCLE NETWORK PLAN






- Existing Multi-use Trails Paved
- Future Multi-use Trails Paved
- Future Multi-use Unpaved Trail
- Existing On-street Bike Route
- Future On-Street Bike Routes

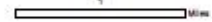


Larger map shown in Appendix L



Existing and Future Pedestrian Network Long Term Plan (DRAFT)

-  Existing Multi-use Trails Paved
-  Future Multi-use Trails Paved
-  Future Multi-use Unpaved Trail
-  Existing Sidewalks
-  Future Sidewalks



Notice: This map contains the result of a study of existing, existing and future multi-use trails. It is not intended to be a legal document. The City of Kingman reserves the right to modify or update this map at any time without notice. The City of Kingman is not responsible for any errors or omissions on this map. The City of Kingman is not responsible for any damages or injuries resulting from the use of this map. The City of Kingman is not responsible for any damages or injuries resulting from the use of this map.

