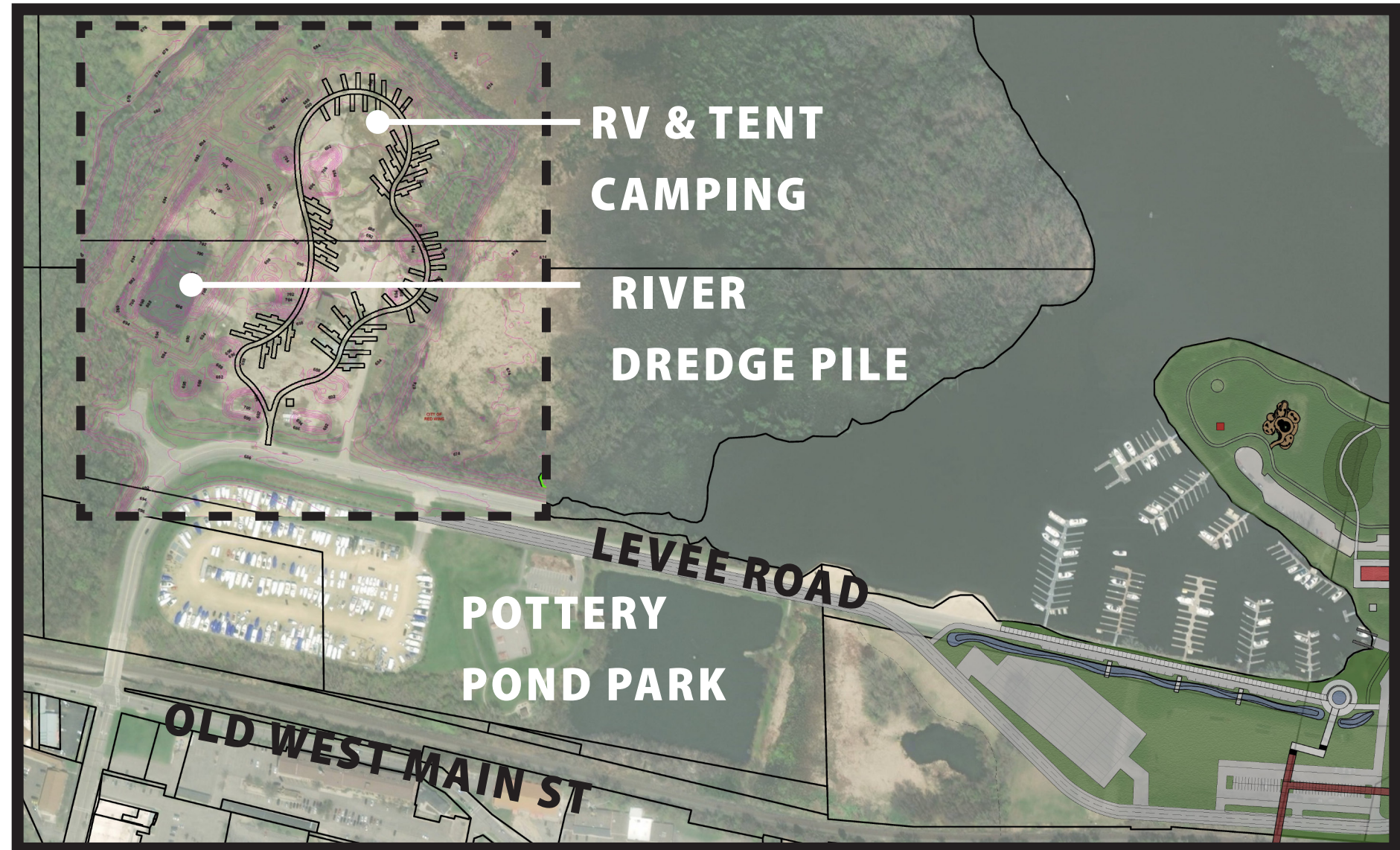


BAY POINT PARK CONCEPT OVERVIEW

CONCEPTS WORKS ON:

- Expanding the park and improving circulation and green spaces by re-locating Levee Road away from water front.
- Elevating the design and experience of the pedestrian/bike bridge from Old West Main to the river and Bay Point Park.
- Converting existing Levee Road to a water front promenade, with water quality rain gardens and flexible open spaces for events and passive recreation.
- Creating a paved grain truck fleeing area that doubles as public event parking.
- Creating more programmable spaces within the park such as:
 - Marina.
 - Improved picnic shelters.
 - Amphitheatre.
 - Riverfront walk.
 - Native storm water features.
 - Event parking.
 - Camping (RV & tent).
 - Farmers Market.
 - Open park lawn for flexible uses.
 - Active uses: Winter skate loop, Pump track, challenge course, etc.



UPPER HARBOR - CAMPING CONCEPT



Pump Track



Ped & Bike Bridge



Amphitheatre



Challenge Course



Picnic Shelter



Exercise/Play

BAY POINT PARK/UPPER HARBOR/OLD WEST MAIN - CONCEPT 1



BAY POINT PARK/UPPER HARBOR/OLD WEST MAIN - CONCEPT 2

- CONCEPT 2 FEATURES:**
- Levee Road relocated away from river to create more park connectivity.
 - Pedestrian/bike bridge crosses re-located Levee Road with curved ramp towards river, stairs to Levee Road.
 - Existing Levee Road converted to riverfront walk and parking.
 - Marina with event stage and lawn. south of boat launch.
 - Grain truck fleetling/event parking on south side of relocated Levee Road.
 - Adventure/ nature play/exercise area.
 - Winter ice skate loop / summer walk/bike loop.
 - Water quality rain gardens integrated with trails.
 - Trail improvements for safer pedestrian/bike connections.



WHAT DO YOU THINK?

Place dots on the boards and share your thoughts using a comment card and/or the sticky notes provided:

I like this!

This could use some work.

What about this idea?



Ped/Bike Bridge + Stormwater



Native Planting



Skating Loop



Event Lawn



Updated River Front



Rock Climbing