



STORMWATER POLLUTION PREVENTION PLAN ANNUAL REPORT 2019

City of Red Wing

Email: swppp@ci.red-wing.mn.us

Tel: 651-385-5143

Website: www.red-wing.org



TABLE OF CONTENTS

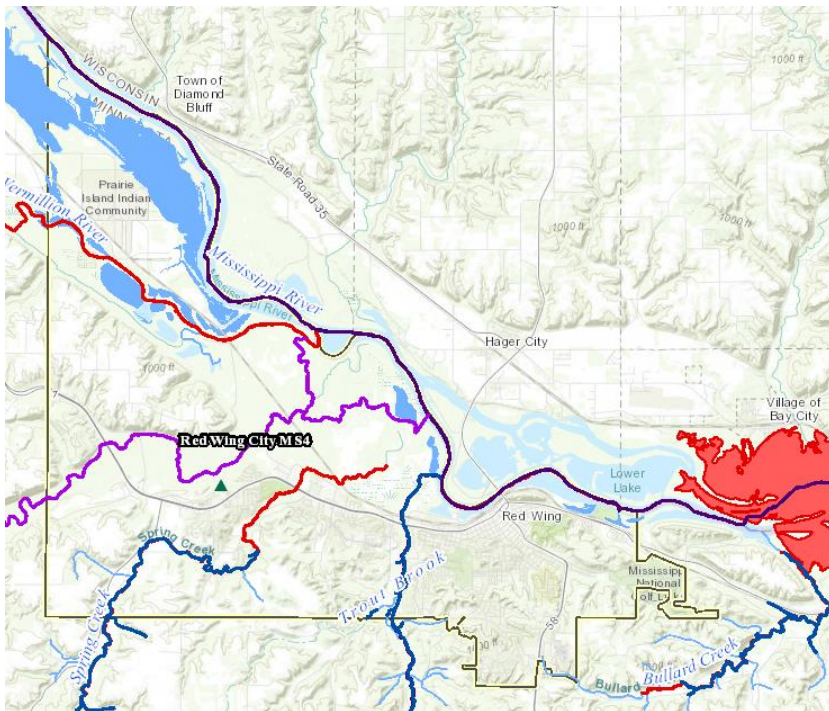
Introduction _____	3
Stormwater Pollution Prevention Plan _____	4
Public Education and Outreach _____	5
Distribute Education Materials _____	5
Public Education Program _____	6
Public Involvement and Participation _____	5
Annual Public Meeting _____	9
Input and Opinion on the Adequacy of the SWPPP _____	9
Consider Public Input _____	10
Illicit Discharge Detection and Elimination _____	11
Storm Sewer System Map _____	11
Regulatory Control Program _____	11
IDDE Plan and Enforcement _____	12
Non-Stormwater Discharges and Flows _____	12
Construction Site Runoff Control _____	13
Construction Site Ordinance _____	13
Site Plan Reviews and Grading Permits _____	13
Construction Site Inspections and Enforcement _____	14
Post Construction Runoff Control _____	16
Post Construction Runoff Ordinance _____	16
Operation and Maintenance of BMPs _____	16
Pollution Prevention & Good Housekeeping _____	17
Municipal Operations and Maintenance Program _____	17
Street Sweeping _____	17
Inspection of Structural Pollution Control Devices and Material Storage Yard _____	17
Record Retention and Reporting _____	18
Impaired Waters _____	20
SWPPP Modifications _____	22
2018 Stormwater Activities _____	23

INTRODUCTION

The City of Red Wing, situated on the Mississippi River and surrounded by limestone bluffs has some of the most precious and beautiful water resources around. The City of Red Wing is committed to protecting these resources by aggressive stormwater management.

Stormwater threatens these water resources when rain or melting snow cannot infiltrate into the ground and flows across impervious surfaces like roads, parking lots, and rooftop. In 2019, Red Wing received over 40 inches precipitation, making it yet again, one of the wettest years on record. This equates to millions of gallons of water falling on human-altered surfaces that change the natural flow of the precipitation. Stormwater picks up pollutants like trash, chemicals, bacteria, sediment, nutrients, and leaf litter that flow directly into our surrounding water bodies. These pollutants degrade our water bodies and cause fish consumption advisories, poor water quality, excess algae, and uninhabitable ecosystems for sensitive species. 2019 also saw very significant flooding, which also picks up stormwater pollutants.

“The surest way to improve water quality in Minnesota is to better manage stormwater.” – Minnesota Pollution Control Agency



Impaired Waters in the City of Red Wing

Cannon River	Outstanding resource value water Concern for aquatic life, PCB in fish & nutrients
Hay Creek	Cold-water trout stream Concern for E. coli
Mississippi River	Concern for turbidity, mercury in fish & PCB in fish
Spring Creek	Cold-water trout stream Concern for turbidity & aquatic life
Trout Brook	Cold-water trout stream
Vermillion River	Concern for mercury in fish, PCB in fish & turbidity

Major Surface Water Bodies

STORMWATER POLLUTION PREVENTION PLAN

The National Pollutant Discharge Elimination System (NPDES) is the regulatory mechanism to control discharges into surface water bodies. This program issues permits to protect and reduce the amount of pollutants entering water bodies from municipal, industrial and construction activities. The City of Red Wing began its Stormwater Pollution Prevention Plan (SWPPP) in 2007 when the Minnesota Pollution Control Agency (MPCA) designated it as a regulated Municipal Separate Storm Sewer System (MS4). To comply with our NPDES permit, the City of Red Wing created a detailed plan to reduce stormwater pollution. The SWPPP addresses six minimum control measures(MCMs):

1. Public Education and Outreach
2. Public Involvement and Participation
3. Illicit Discharge Detection and Elimination
4. Construction Site Runoff Control
5. Post Construction Runoff Control
6. Pollution Prevention and Good Housekeeping

Within each minimum control measure are specific activities and measurable goals. The progress and activities for each MCM is outlined below.



PUBLIC EDUCATION AND OUTREACH & PUBLIC INVOLVMENT AND PARTICIPATION (MCM 1 & 2)

Each year, the City of Red Wing identifies specific topics or activities as high priority issues to concentrate on for education and outreach efforts. Construction activities and yard waste were the high priority issue to be emphasized in 2019.

Distribute Education Materials

The City of Red Wing informs its citizens about stormwater pollution prevention by publishing articles on its website and in the newspaper Republican Eagle, attending events, and broadcasting informational videos on the cable access Channel 6. The City also distributes “Erosion Control Requirements” packets as part of the building permit process.

Type	Topic	Location	Estimated Number Distributed
Article	“Stormwater Pollutants in Flooding”	City Beat, Facebook	5,500
Event	Earth Day at Barn Bluff	Barn Bluff Trailhead	60
Article	“Lawncare & Stormwater”	Republican Eagle Newspaper	4,275
Article	Raingardens in Red Wing	City Beat, Facebook	5,500
Website	Stormwater Webpage	Website	241
Event	Red Wing Conservation Club Presentation	Red Wing Conservation Clubhouse	15
Event	Storm Drain Murals & Booth at River City Days	Bay Point Boat houses and Park	50,000
Article	“Smart Salting”: salt/sand	City Beat	468
Packets	“Erosion Control Requirements”: construction	Planning	24
Video	“Puddles” – PSA	Channel 6	50 hours
Video	Watershed Demo	Channel 6	42 hours
Article	Sidewalk Salt	Twitter	478
Article	“Got Sand?”	Facebook, Twitter	6,500
Doorhanger	Environmental Reminders	Door hanging near affected areas	20
Video	“Drinking Water” - PSA	Channel 6	52 hours
Video	“Down the Drain” - PSA	Channel 6	8.4 hours

Video	“Fish in Bowl” – PSA	Channel 6	4.4 hours
Video	Stormwater Promo – 2013	Channel 6	16 hours
Video	Safe Water Promo 2014	Channel 6	56.4 hours
Video	Stormwater PSA	Channel 6	4 hours
Video	Stormwater 101 – PSA	Channel 6	11.2 hours
Video	“What is Stormwater” – PSA	Channel 6	8.8 hours
Video	“Stormwater Sketch” – PSA	Channel 6	8.8 hours
Video	“Stormwater Crime” – PSA	Channel 6	8.8 hours
Utility Bill Insert	Stormwater Pollution Prevention	Mailing	1,400

Public Education Program

The City of Red Wing’s Stormwater public education program informs citizens and students about the impact of stormwater discharges on waterways and how the public can take steps to reduce pollution in stormwater runoff.

Presentation to Red Wing Conservation Club

City utility staff was invited to present to the Red Wing Conservation Club on March 21, 2019.

Members learned about how the city manages stormwater and protects our surface water resources.

They also learn about some of the history of Red Wing drinking water utilities.

Storm Drain Murals

Through a partnership with ArtReach, storm drains at Bay Point Park were stenciled during River City Days with artwork highlighting the importance of keeping stormwater clean. This event draws approximately 50,000 people to the Bay Point Park area.



Pottery Pond Macroinvertebrate Investigation and Red Wing Conservation Club 3rd Grade Day

In 2019, two long-standing stormwater education programs were unfortunately cancelled. Red Wing Park Naturalists hold a macroinvertebrate investigation at Pottery Pond to teach children about what can be found in the pond. City staff partners to educate that the health of the water directly correlates to the number and type of macroinvertebrates found. This event was cancelled due to low attendance. The Red Wing Conservation Club intended to revive their 3rd Grade Outdoor Day at their clubhouse in 2019. Students experience many hands-on outdoor activities and the City staff education about stormwater pollution and clean surface water. This event was cancelled due to flooding. The City looks forward to participating in these events in 2020.

Charlson Crest Water Treatment Plant Tours for 4th Graders

May 7 -10, 2019, Burnside 4th grade students visited the Charlson Crest Water Treatment Plant. Approximately 200 students learned what steps are taken to treat drinking water and how the operations work. Students also learned how stormwater pollution can effect drinking water sources and surface water.



Pet Waste Stations

The City of Red Wing maintains 8 pet waste cleanup stations at 5 locations across the City to encourage pet owners to clean up after their pets. Pet waste is the number one source of E coli in stormwater in urban areas. Pet waste stations are kept fully stocked with MuttMitt bags at the Goodhue County Historical Museum, Bay Point Park, Colvill Park, Memorial Park, and AP Anderson Park. In 2019, more than 24,000 pet wastes bags were provided.

Yard Waste Composting

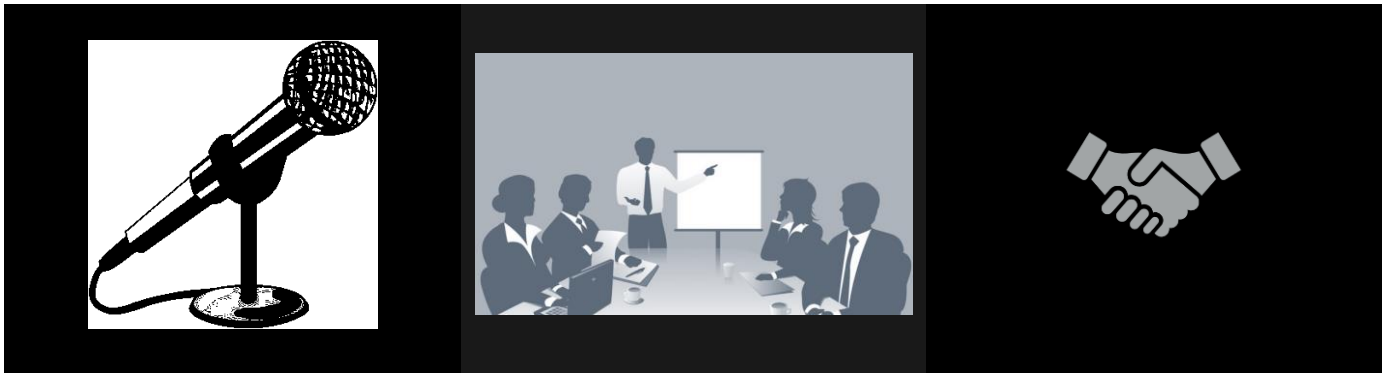
The City of Red Wing operates a yard composting facility at the Solid Waste Campus. Here residents can bring leaves and yard waste to dispose of for free. The yard waste is composted by city staff and residents can take the resulting compost for free also! This encourages residents to keep leaves and grass clippings out of city streets. In 2019, 3,380 tons of yard waste were brought to the Solid Waste Campus to be composted. Yard waste, such as leaves and grass clippings left in the street wash down the storm sewer and right into the river, contributing a large amount of nutrients to water bodies.

Pottery Pond Rain Garden

Pottery Pond Rain Garden was installed in 2009. The Red Wing Master Gardeners spend many hours maintaining the rain garden each year. The Master Gardeners have also installed educational signage in and around the rain garden to educate people about the importance of rain gardens and native plants for clean water.

Annual Public Meeting

The annual public meeting on Red Wing's SWPPP was held on April 8, 2019 to discuss the adequacy of the SWPPP and allow interested people to comment. Public meeting notice was published 30 days prior to the meeting on March 5, 2019. The public meeting was held has part of the city council meeting and was attended by 30 people. The SWPPP was also a topic of the April 22 meeting to allow time for additional comments.



Red Wing's SWPPP and annual report was also presented to the Sustainability Commission on June 25, 2019. The new permit issues was also discussed and members brainstormed ideas to comply with the new permit.

Input and Opinion on the Adequacy of the SWPPP

City staff received one comment on the SWPPP in 2019. A citizen was interested in having more opportunity for public comment on the program and Citizens and interested people are encourage to attend the public meeting and give feedback on the SWPPP. The SWPPP can also be viewed on the City's website at <https://www.red-wing.org/stormwaterurl.html> and input can be sent to swppp@ci.red-wing.mn.us.

Consider Public Input

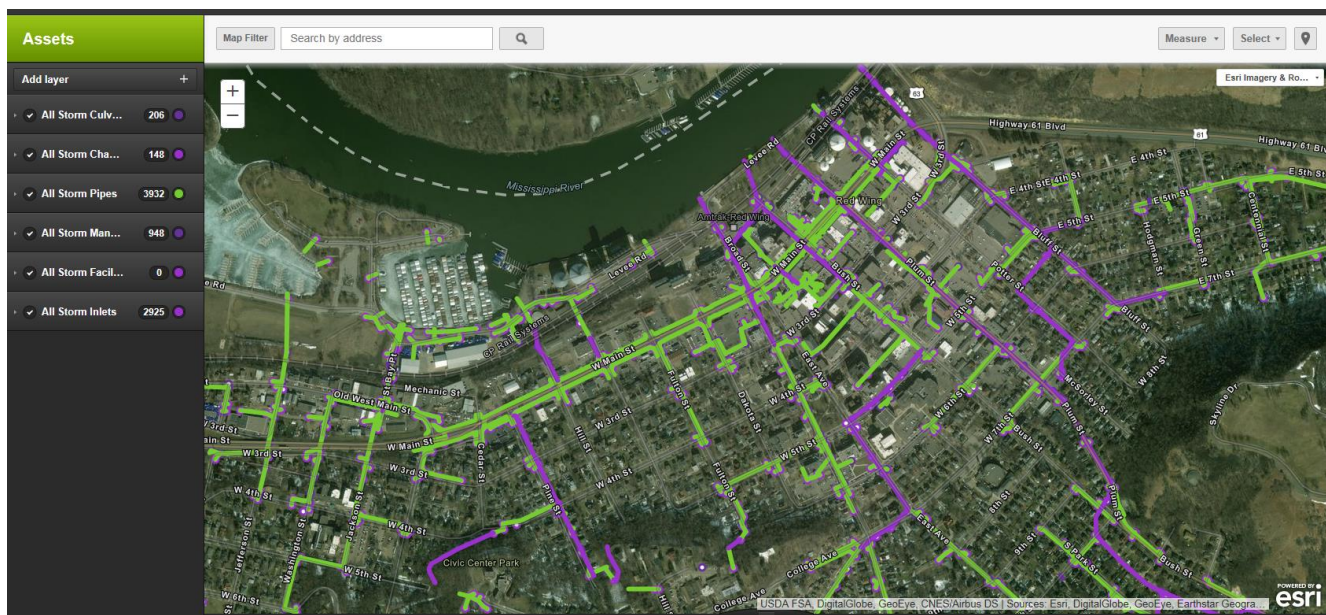
Input by concerned persons and groups will be reviewed by appropriate city staff in order to determine if the suggestions are relevant to the goals of the SWPPP and, if so, how they could be implemented. Based on the comments received in 2019, public comment and participation opportunities will be more clearly emphasized at the annual public meeting.

ILLICIT DISCHARGE DETECTION AND ELIMINATION

Storm Sewer System Map

The City of Red Wing maintains a storm sewer system map that includes ponds, streams, lakes, wetlands and structural pollution control devices. These devices include outfalls greater than 12 inches, catch basins and all pipes and conveyances. This GIS map is updated as development and re-development projects are completed, repairs or maintenance are required, or unknown connections are discovered.

Red Wing's Storm Sewer System	
962 Manholes	
2,977 Inlets	
270 Outlets	
72 Ponds	
7 miles of storm tunnel	
50 miles of storm water pipes	



Regulatory Control Program

The City of Red Wing has ordinances to prohibit non-stormwater discharges into the sewer system. These ordinances specifically address illicit discharges, septic systems, illegal dumping, obstruction of

the sewers, and the discharge of pollutants into the storm sewer. These ordinances are reviewed annually to ensure their effectiveness.

IDDE Plan and Enforcement

The City of Red Wing maintains an Illicit Discharge Detection and Elimination (IDDE) plan to detect and address non-stormwater discharges throughout the City. The City instructs the public and employees on how to identify illicit discharges and report them to the SWPPP staff. The staff investigates these reports and takes immediate action to remediate the discharge. All Public Works field staff are annually trained specifically in illicit discharge detection and reporting. In 2019 there were 15 illicit discharges or spills detected. Two of these discharges was reported by the public and the other 13 were discovered by City staff. These illicit discharges initiated verbal warnings. All the illicit discharges were sufficiently addressed through the written Enforcement Response Procedures.

Spill Kits

Many City vehicles are stocked with spill kits that include absorbant pads and booms in case of a spill or illicit discharge. In addition to the mobile spill kits, there are larger spill kits available at most of the larger City-owned facilities. All the spill kits are restocked annually or after a use and City staff is trained on how to use the materials.

Non-Stormwater Discharges and Flows

The City of Red Wing annually reviews its operations and activities to determine if they are significantly contributing to stormwater. These may include: waterline flushing, discharge from pools, irrigation, groundwater, fire-fighting activities, and air conditioning condensation. No discharges were identified as significantly contributing to stormwater in 2019.

CONSTRUCTION SITE RUNOFF CONTROL

Construction Site Ordinance

Division 57 “Stormwater Management Regulations” of the City Zoning Code outlines the responsibilities of every contractor or developer actively engaged in disturbing a land area of one acre or more inside the city limits. This regulatory mechanism aligns with the MPCA’s general permit to Discharge Stormwater Associated with Construction Activity. This ordinance is evaluated annually to ensure it complies with the MS4 permit requirements.

Construction Stormwater Management Controls in Division 57
Site Dewatering
Waste and Material Disposal
Tracking
Drain Inlet Protection
Site Erosion

In 2018, the Construction Stormwater General permit expired and was reissued with a new version. Minor changes were made to times frames, amendments and documentation, and clarification of some sections. Red Wing’s current SWPPP is adequate to comply with the permit changes.

Site Plan Reviews and Grading Permits

Red Wing’s Engineering and Community Development Departments review site plans on sites with one acre or more of soil disturbance for construction and more than 50 cubic yards for grading to ensure the site adheres to appropriate stormwater best management practices. In 2019, three site plans were reviewed and there were six active construction sites with one acre or more of disturbance. Three sites had plan reviews in prior years. On sites less than one acre, the City Engineer and the Zoning Administrator shall determine if a stormwater management plan is required.

Construction Site Inspections and Enforcement

During construction, SWPPP staff inspects the construction sites to ensure the plans are being fulfilled. In 2019, 96 site inspections occurred by City staff, and specific enforcement action was taken to compel compliance with the construction stormwater management regulations. City staff also received weekly inspection reports from the Mississippi River Bridge Project. In 2019, City staff focused on working closely with contractors to achieve the stormwater goals by creating relationships and educating about expected objectives.

Enforcement Action	Number Issued
Verbal Warning	25
Notice of Violation	0
Stop Work Order	1





Erosion control blankets



Vehicle tracking into roadway



Sediment from construction activity runoff clogging a storm drain

POST CONSTRUCTION RUNOFF CONTROL

Post Construction Runoff Ordinance

Division 57 in the City Zoning Code requires significant attention to post-construction stormwater pollution mitigation practices. This ordinance gives preference to green infrastructure techniques, requires no net increase of stormwater discharge volume and requires infiltration or retaining the first one inch of precipitation over the impervious surface of a site one acre or greater. This ordinance is evaluated annually to ensure it complies with the most recent regulations.

Operation and Maintenance of BMPs

The City of Red Wing inspects and maintains post construction stormwater BMPs on a regular basis to ensure proper function. Any structural stormwater BMPs that the City determines to be privately owned must be inspected annually by the owner and all inspection and maintenance agreements must be recorded. All required routine inspections and maintenance were completed in 2019.

POLLUTION PREVENTION & GOOD HOUSEKEEPING

Municipal Operations and Maintenance Program

The City of Red Wing holds an annual information meeting for Public Works employees to educate on activities that might impact stormwater in their day-to-day activities. Training topics include: equipment washing, equipment maintenance, good housekeeping, spill reporting and response, street maintenance, material storage, landscaping, and IDDE. In 2019, the employee training was held on March 19. All seasonal workers in the City of Red Wing attended a similar presentation on June 11. An additional training was held on May 30th for city sewer collection and water distribution operators on what to do in the event of a sewer overflow or spill. A meeting for street maintenance workers was held on October 31, 2019 to outline proper use of sand and salt in the winter months.

Street Sweeping

The City of Red Wing has an aggressive street sweeping program to keep refuse out of storm sewers. The streets are swept at least three times each year with an emphasis on seasonal sand and leaf removal. Additional sweeping activities occur for spill clean-up or debris removal as needed. In 2019, 1,232 hours were spent sweeping and approximately 1,856 cubic yards of debris were removed from the streets. This is 100 more hours than 2018 and 400 more cubic yards of debris.

Inspection of Structural Pollution Control Devices and Material Storage Yard

Every year, the City inspects all structural pollution control devices like sump catch basins and manholes, and 20% of stormwater outfalls and ponds. Results of these inspections may trigger maintenance operations if it is required. The City also inspects all stockpiles, storage, and material handling areas quarterly to ensure they are managed appropriately. In 2019, all required inspections and maintenance were completed. City staff spent 446 hours maintaining storm ponds and surrounding vegetation in 2019.

In 2018, City staff changed the method used for pond surveys to better understand sedimentation in the stormwater ponds. The method now used is similar to a bathymetric approach, where multiple depth measurements are taken across a pond and the bottom of the pond is mapped with the help of computer aided drawing. This allows staff to better calculate volumes of sediment and pond capacity. This method continued in 2019 with great success.



Stormwater Inspections and Maintenance			
Asset	Total	Inspected	% Inspected
Structural Stormwater BMPs	19	13 (others under water)	68
Outfalls	252	49	19
Ponds	62	19	31
Material Storage Yard	1	1	100

Record Retention and Reporting

The City of Red Wing summarizes all the results of SWPPP related inspections and activities in this annual report and the SWPPP Annual Report to the MPCA. The City also maintains records of inspection dates, findings, and responses. These records are in various electronic and hard copy states located on the City website, asset management software and in the offices of Environmental Services. All records will be made available upon request.

Industrial Stormwater Permits

In addition to the MS4 permit, the City of Red Wing also holds Industrial Stormwater Permits for areas of industrial activity owned by the City of Red Wing. These areas include: the Solid Waste Campus, the Little River Bulkhead, Colvill Marina, Ole Miss Marina, the Wastewater Treatment Plant, the Industrial Wastewater Pretreatment Plant, and the Goodhue Co/Red Wing Ash Landfill. These areas get special attention to prevent stormwater pollution that includes specific best management practices, inspections, and stormwater sampling. All industrial stormwater permit activities were completed in accordance with permit requirements in 2019.

The permits for these sites fall under the MPCA Industrial Stormwater General Permit. This permit expires April 1, 2020. The permit renewal applications have been submitted for all industrial sites for the 2020-2025 MPCA Industrial Stormwater General Permit. The submittals included “No-Exposure” certification for Colvill Marina and the Goodhue Co/Red Wing Ash Landfill. More information about these permits can be found here: <https://www.pca.state.mn.us/water/industrial-stormwater>

IMPAIRED WATERS

The City of Red Wing reviews all discharges from our MS4 system to impaired waters, as defined by the current USEPA approved 303(d) list. The SWPPP incorporates measures to assess the adequacy of the stormwater program to meet Total Maximum Daily Load (TMDL) Waste Load Allocations (WLAs).

Water Body	US EPA Approved Impairment
Bullard Creek	E. coli
Cannon River	E. coli, PCBs, Turbidity
Hay Creek	E. coli, Turbidity
Lake Pepin	Nutrient/Eutrophication
Mississippi River	Mercury, PCBs, Turbidity
Spring Creek	E. coli, Turbidity

The City of Red Wing's current SWPPP is adequate to meet the requirements of the completed TMDLs and WLAs. The SWPPP will be updated to meet new requirements as they are apportioned. It is expected that new actions may be required as we learn more about the status of Lake Pepin as an impaired water.

What water body impairments are associated with stormwater?

Lakes	nutrients (primarily phosphorus) and pathogens impair the lake for recreational use
Rivers/ streams	nutrients, sediment, chloride, pathogens, and temperature impair the river/stream for aquatic vegetation, recreation, and habitat
Wetlands	nutrients and sediment impair wetlands for habitat

Stormwater module 1: Overview of stormwater effects on water quality
7

The Mississippi River – Lake Pepin Tributaries Total Maximum Daily Load addressed the *E. coli* impairment for Bullard and Hay Creek within the Red Wing MS4 boundary. The following table shows the Wasteload allocation for the City of Red Wing. At this time, no load reductions are required by the City of Red Wing to meet the WLA stated in this TMDL.

Table 4.2. *E. coli* TMDL summaries.

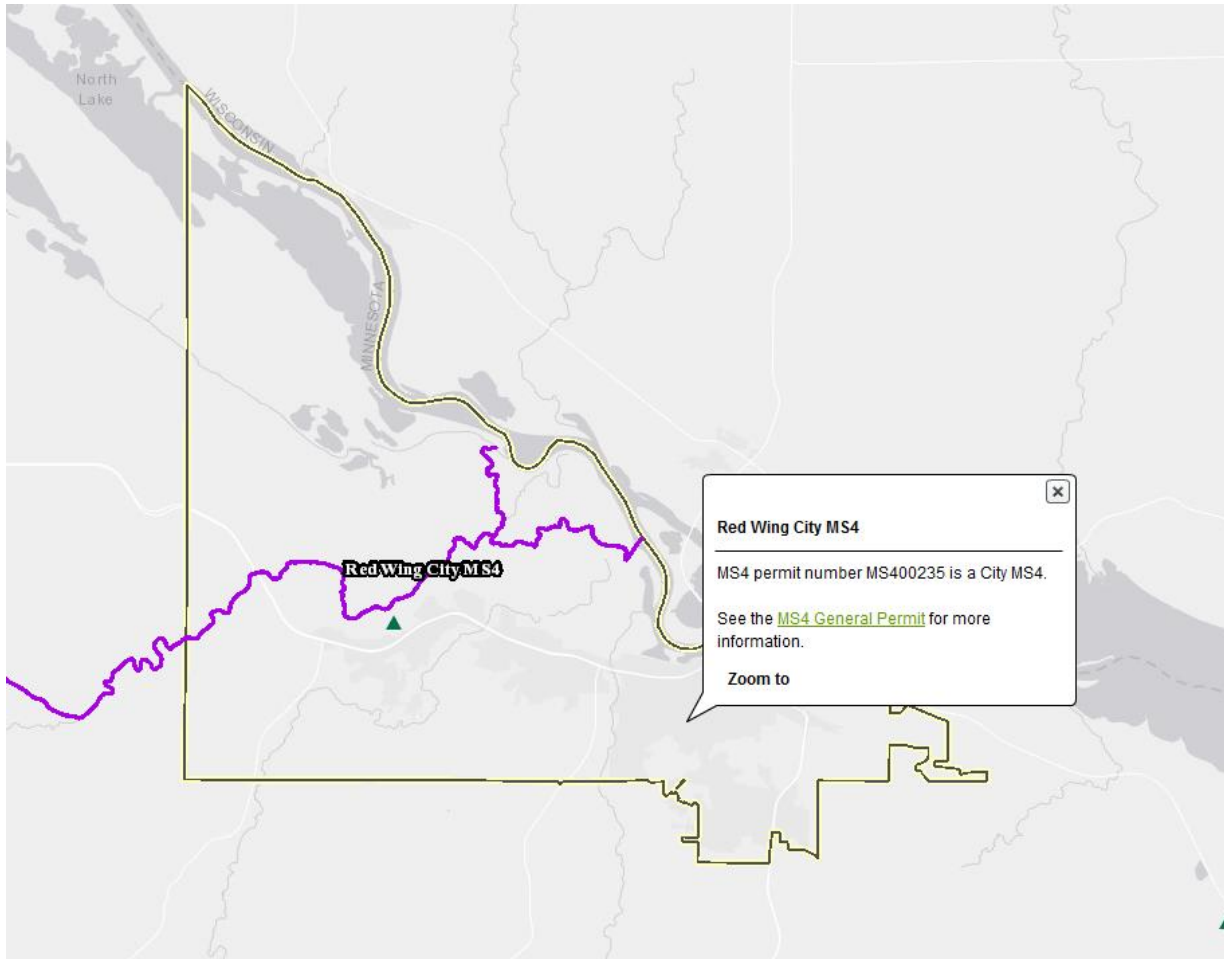
		Flow Regime				
		VHigh	High	Mod	Low	VLow
Hay Creek TMDL Summary		Billions of Organisms/day				
Loading Capacity (TMDL)		102	80	73	65	53
Wasteload Allocation	Total WLA	9.3	7.3	6.7	5.9	4.8
	Red Wing MS4 (MS400235) 10.2%	9.3	7.3	6.7	5.9	4.8
Load Allocation		82.5	64.7	59.0	52.6	42.9
Margin of Safety		10.2	8.0	7.3	6.5	5.3
90 th Percentile Value from WQ Data		3406	1238	1416	222	190
Bullard Creek TMDL Summary		Billions of Organisms/day				
Loading Capacity (TMDL)		34	26	24	21	17
Wasteload Allocation	Total WLA	0.7	0.5	0.4	0.4	0.3
	Red Wing MS4 (MS400235) 2.3%	0.7	0.5	0.4	0.4	0.3
Load Allocation		29.9	22.9	21.2	18.5	15
Margin of Safety		3.4	2.6	2.4	2.1	1.7
90 th Percentile Value from WQ Data		NA	194	285	115	40

The City of Red Wing satisfies its WLA by using the following best management practices:

- Increasing the population with properly functioning sewage treatment systems (septic systems) within the City boundaries. City staff tracks the number of permits issued for septic systems each year and directs residents with failing systems to connect to the municipal sewer system.
- Ensuring proper management of biosolids application and remediation of sewer overflows or spills.
- Reducing the amount of stormwater runoff by mandating new construction over 1 acre capture and treat the first one inch of rainfall on new impervious surface. Infiltration practices are preferred over other methods.
- Monitoring construction sites with construction stormwater permits to ensure compliance.
- Ordinances that limit activities along the river front to protect the natural land buffer along rivers and streams.

SWPPP MODIFICATIONS

The City did not modify its SWPPP in 2019. Large changes are expected in 2020 with the MPCA MS4 Permit reissuance.



2020 STORMWATER ACTIVITIES

The City of Red Wing's MS4 Stormwater Annual Report for 2019 was submitted to the MPCA on February 13, 2020. The MPCA annual report and this summary will be made available on the stormwater page on the City's website.

The current general permit authorization to discharge stormwater from MS4s expired July 31, 2018. This is a five-year permit cycle. Part 1 of the application for permit reissuance was submitted in February 2018. This document contained requested contact and program management information for the stormwater participants at the City. Part 2 of the application will be the SWPPP document for the City of Red Wing. At this time, the MPCA has issued a draft and completed the public comment processes. The final permit is expected soon. When these documents become available, the SWPPP will be updated to meet the most current requirements.

Stormwater Goals in 2020
Update SWPPP to meet new permit requirements
Focus on smart salting use as a high priority issue
Explore areas for community participation
Enlist service groups for projects
Continue connections with partners such as, Cannon River Watershed Partnership, GCSWCD, Master Gardeners, Park Naturalists, Red Wing Conservation Club
Utilize social media tools
Increase public feedback about actions they would like to see in Red Wing's stormwater management
Meet with focus groups, such as the Sustainability Commission to guide stormwater activities
Integrate Red Wing 2040 Plan with the SWPPP