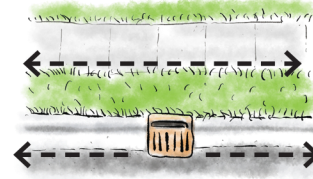




# Tips on how to clear your storm drain and be safe while doing it



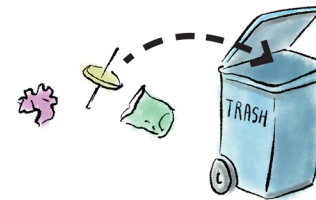
**Helpful tools for cleaning** the storm drain: a broom, a rake, a trash grabber, gloves, an orange cone and/or safety vest, a snow shovel or dustpan, and a pail or yard waste bag. (A rolling pail could be deluxe if you have one.)



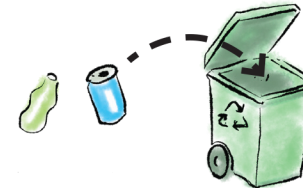
**Not just the drain.** While the program asks you to adopt a drain, clearing debris from streets and sidewalks is helpful, since anything on pavement can wash into storm drains when it rains.



Clean only the surface of the storm drain grate and the area around it. **Never remove the grate** or otherwise attempt to clean inside the catch basin. If the drain seems to be plugged or have any problem, contact city staff and they will send workers to address the issue.

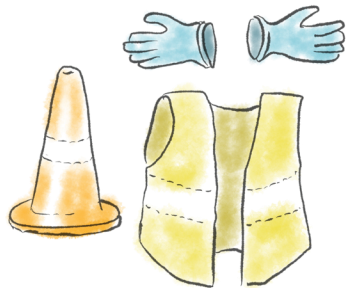


**To dispose of waste, separate it into three categories** and place it in the appropriate receptacle: trash, recyclables (glass and plastic bottles, cans) and compostables (leaves, grass clippings, sticks, and sediment).



## Sediment you collect in the spring

is not compostable, as it contains chemical residue from deicers used over the winter. Put it in the trash. If there is a lot of spring sediment near your drain, you may want to let city street sweepers take care of it since many trash haulers will not take sediment. If there is A LOT of sediment near your drain, notify city staff, as this may be an indicator of a bigger problem.



**Safety first!** There could be something sharp or otherwise harmful near the drain, so wear gloves to protect your hands and be careful when picking up leaves and trash. You might want to use a trash grabber to collect debris.

Consider wearing **bright or reflective clothing** when you are clearing the storm drain to make sure you are visible to cars. Do not stand or crouch on busy streets.



**Busy streets.** It's best to adopt drains on local residential streets. If you do adopt a drain on a street with lots of traffic, please stick to clearing trash and debris from the sidewalk and let city staff take care of the street and the surface of the storm drain.



If you have **questions about how to properly dispose of trash**, compost and recyclables, contact the city or your garbage collection service.



If you have any **questions about the Adopt-a-Drain program**, please email us: [adoptadrain@hamline.edu](mailto:adoptadrain@hamline.edu)