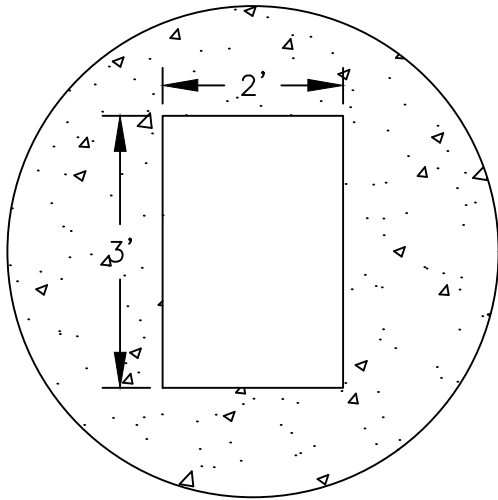
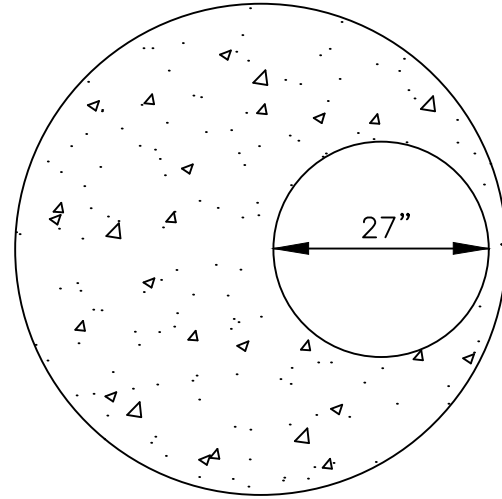


PRECAST SOLID CONCRETE COVER



**MH-CB
CENTERED**

(UNLESS OTHERWISE NOTED IN PLAN)

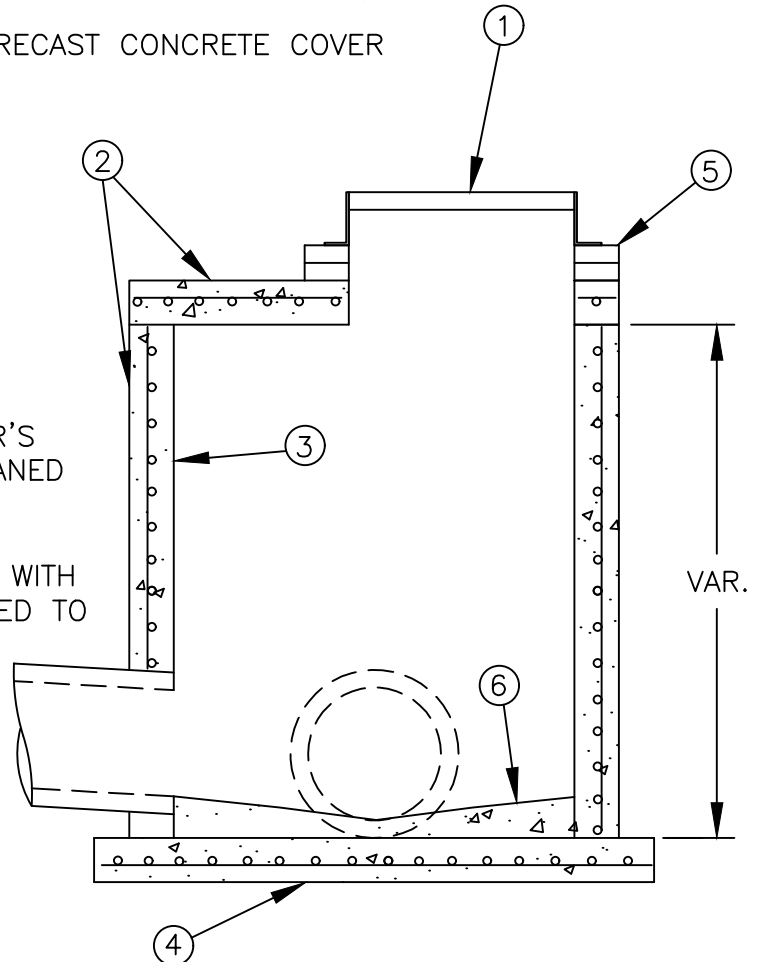


**STORM MH
OFFSET**

(UNLESS OTHERWISE NOTED IN PLAN)

NOTES:

- ① REFER TO PLANS AND/OR SPECIAL PROVISIONS FOR FRAME AND GRATE/LID TYPE
- ② SEE MnDOT PLATE NO. 4020 AND 4022 FOR PRECAST CONCRETE COVER AND 4005 FOR MANHOLE BARREL DETAILS
- ③ MANHOLE BARREL MAY BE CONSTRUCTED UTILIZING SOLID CONCRETE MH BLOCK INCORPORATING 3/16" HEAVY DUROWALL REINFORCEMENT EVERY SECOND COURSE
- ④ SEE MnDOT PLATE NO. 4011 FOR PRECAST CONCRETE BASE DETAILS
- ⑤ HIGH DENSITY POLYETHYLENE ADJUSTING RINGS SHALL BE INSTALLED PER MANUFACTURER'S RECOMMENDATION'S STARTING ON A SOLID, CLEANED TOP SECTION OF THE INPLACE STRUCTURE. THE OUTSIDE OF THE ENTIRE RING SECTION SHALL BE SEALED TO THE STRUCTURE WITH A UNI-BAND (RUBBER) SEALING SYSTEM MODIFIED TO PROPERLY SEAL TO FLAT TOP SECTION.
- ⑥ ALL CONCRETE INVERTS SHALL HAVE A MINIMUM OF 2" CONCRETE DEPTH WITH A MINIMUM SLOPE OF 1/4" PER FOOT TO OUTLET. FLOW LINES SHALL BE FORMED TO APPROXIMATE SHAPE OF THE LOWER 4" OF THE OUTLET PIPE.



DATE REVISED
03/24/17

STORM MH/MH-CB

PLATE NO.
1-03