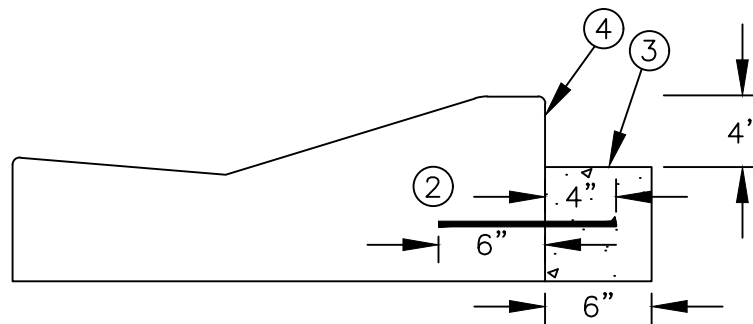
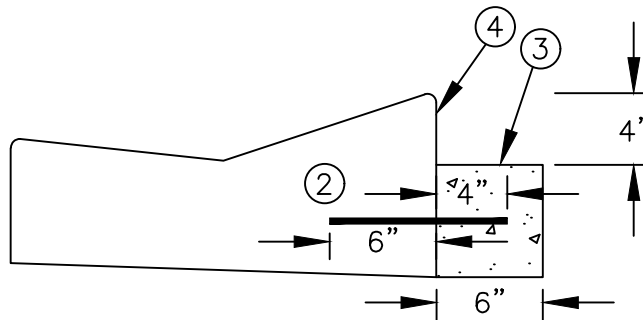


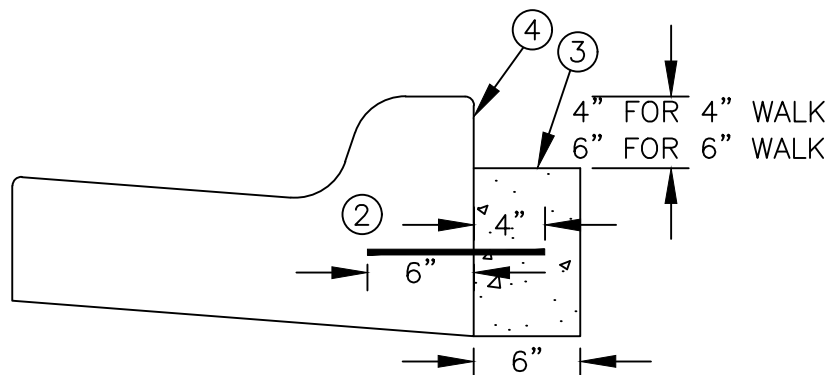
DESIGN D4
MODIFIED



DESIGN D412



DESIGN B4 OR B6



NOTES:

1. CONCRETE SILL TO BE USED WHERE 4" CONCRETE ABUTS D4 MOD, D412, B4, AND B6 AND ALSO WHERE 6" CONCRETE ABUTS B4 OR B6 CURB (EXCEPT THROUGH DRIVE APRONS).
- ② TIE SILL AT 3' CENTERS WITH 10" #4 EPOXY-COATED REINFORCING BARS (GR, 60). IN PLACE CURB WILL REQUIRE DRILLING FOR REINFORCING BAR PLACEMENT. NO REINFORCING BARS REQUIRED IF SILL IS POURED MONLITHICALLY WITH CURB.
- ③ PROVIDE BOND BREAK AT TOP OF SILL.
- ④ PROVIDE 1/2" EXP. JT. AT MEDIAN INFILLS. 1/2" EXP. JT. NOT REQUIRED AT PEDESTRIAN RAMP, SIDEWALK AND CARRIAGE WALK ABUTMENTS.
5. CONCRETE TO BE CONSTRUCTED ON A PROPERLY COMPACTED BASE.
6. MnDOT CONCRETE MIX 3F52 SHALL BE USED FOR SILL CONSTRUCTION IF NOT POURED MONOLITHICALLY WITH CURB.

DATE REVISED
05/22/18

CONCRETE SILL

PLATE NO.
3-02