



# Parking Plan

Approved: May 2024

Downtown District

# Parking Plan Purpose

- ▶ Create an organized, rational, and fair approach to parking.
- ▶ Respond to redevelopment and new housing.
- ▶ Offset parking infrastructure costs.
- ▶ Goals:
  - ▶ Be flexible and responsive to changing needs as the city grows.
  - ▶ Be consistent and follow best practice.
  - ▶ Be realistic and practical to implement.
  - ▶ Be clear and easy to interpret and enforce.
  - ▶ Maximize existing parking without increasing the number of spaces.

# Changes in the Downtown

- 2019 2040 Community Plan outlines Downtown redevelopment plans
- Reuse and renovate vacant and underutilized buildings
  - Upper floor housing
  - Continued riverfront redevelopment

2024 Parking Plan approved

2024 Associated Bank project underway

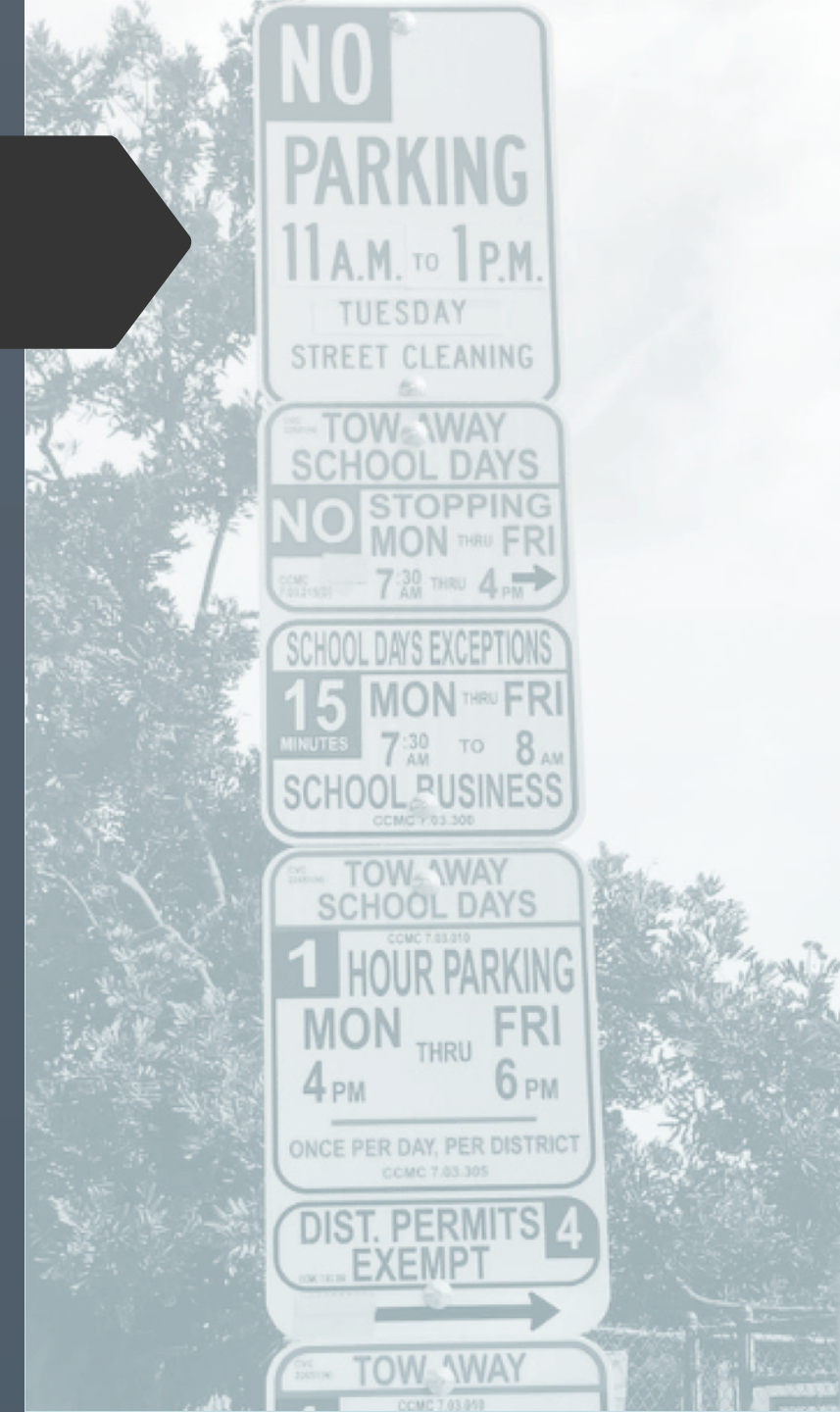
2024 Avanti project completed

- 2025+ Planned redevelopment projects
- Eagle House
  - Hallstrom's
  - Boxrud Building
  - Maltery Building

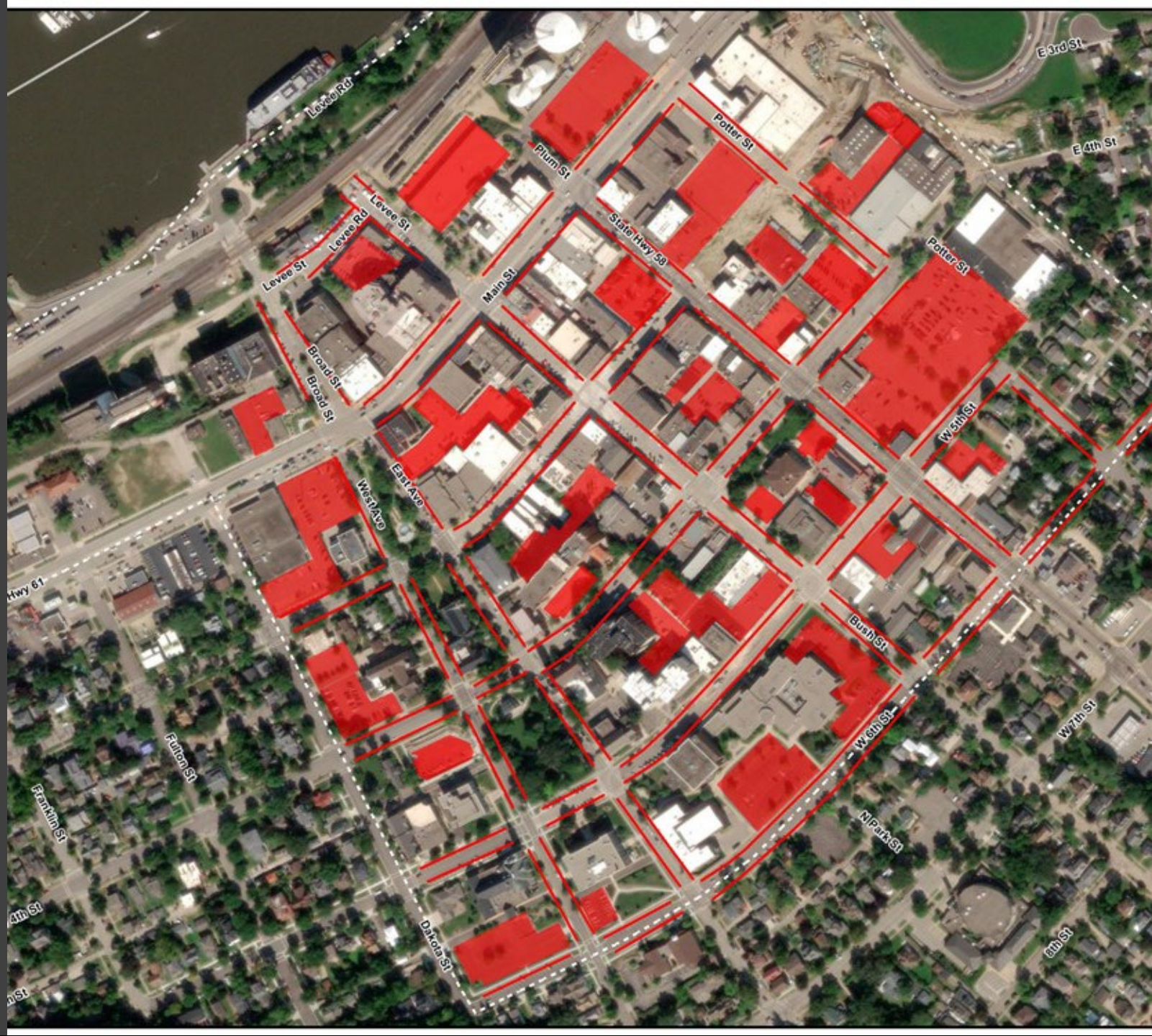


# Existing Downtown Parking

- ▶ 877 Public Off-Street Spaces; 1,403 On-Street Public Spaces
- ▶ Confusing mix of parking regulations
  - ▶ 15-min, 30-min, 1-hour, 2-hour, 3-hour, 4-hour, 9-hour, 20-hour spaces
- ▶ Ramps are underutilized
- ▶ No incentive for employees to park in ramps
- ▶ Inconsistent enforcement



# Downtown Parking



# Peak Parking Occupancy

10:00 am  
Wednesday  
October 12



Peak Overall Occupancy - Wed, Oct 12 Mid-Morning (10 a.m.)

- 0 - 25%
- 25 - 60%
- 60 - 80%
- Greater than 80%

# Plan Recommendations

- ▶ 3-hour parking in downtown core
  - ▶ Allows businesses higher parking turnover rate for their customers
  - ▶ Encourages employees and people who park for many hours to park in ramps or parking lots
- ▶ 15-min spaces
  - ▶ Ensures consistent, logical placement
  - ▶ Provides people with options for quick trips
- ▶ Accessible parking
  - ▶ Additional spaces may be provided by request
  - ▶ ADA-compliant locations prioritized
- ▶ Permits required for overnight parking in lots and ramps
  - ▶ Overnight allowed during [snow emergencies](#)
- ▶ Enforce parking rules





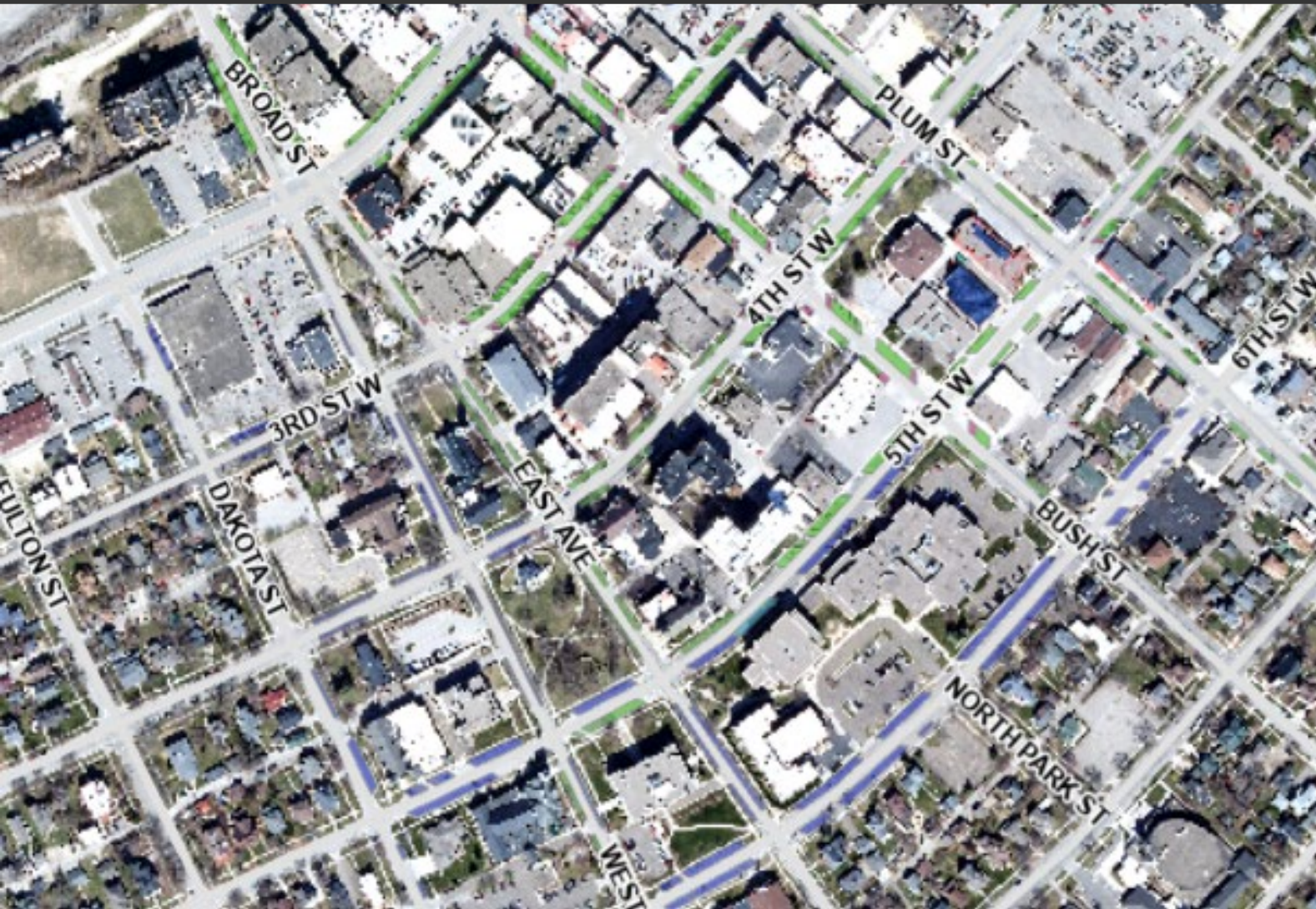
# Proposed Downtown Parking

- Straight-forward regulations
- Consistent, logical placement of 15-min and handicap stalls
- Ramps and lots primarily for employees and longer parking
- Software for online parking permits
- Consistent enforcement





# On-Street Parking



- ▶ Downtown Core
  - ▶ 3-hour parking
    - ▶ Allows businesses higher parking turnover rate for their customers
    - ▶ Encourages employees and people who park for many hour to park in ramps or parking lots
- ▶ Edge of Downtown
  - ▶ No daily restrictions



# 15-Min Parking



- 15-min parking
  - Consistent placement at block-ends and mid-block
  - Provides people with options for quick trips
  - Some 15-min stalls are moving, but overall number of 15-min stalls does not decrease

# Accessible Parking



- ▶ Existing accessible parking spaces to remain
- ▶ Additional spaces may be provided by request
  - ▶ ADA-compliant locations prioritized

# Overnight Permit Parking



- ▶ Available on a monthly or annual basis
- ▶ Permits are non-transferable
- ▶ Guest parking
  - ▶ Up to 5 guest permits with purchase of annual permit
  - ▶ Guest permits valid for 48 hours
  - ▶ Additional permits available at the daily rate
- ▶ Permits for passenger vehicles only
- ▶ Permits do not guarantee or reserve spaces

# Overnight Resident Parking

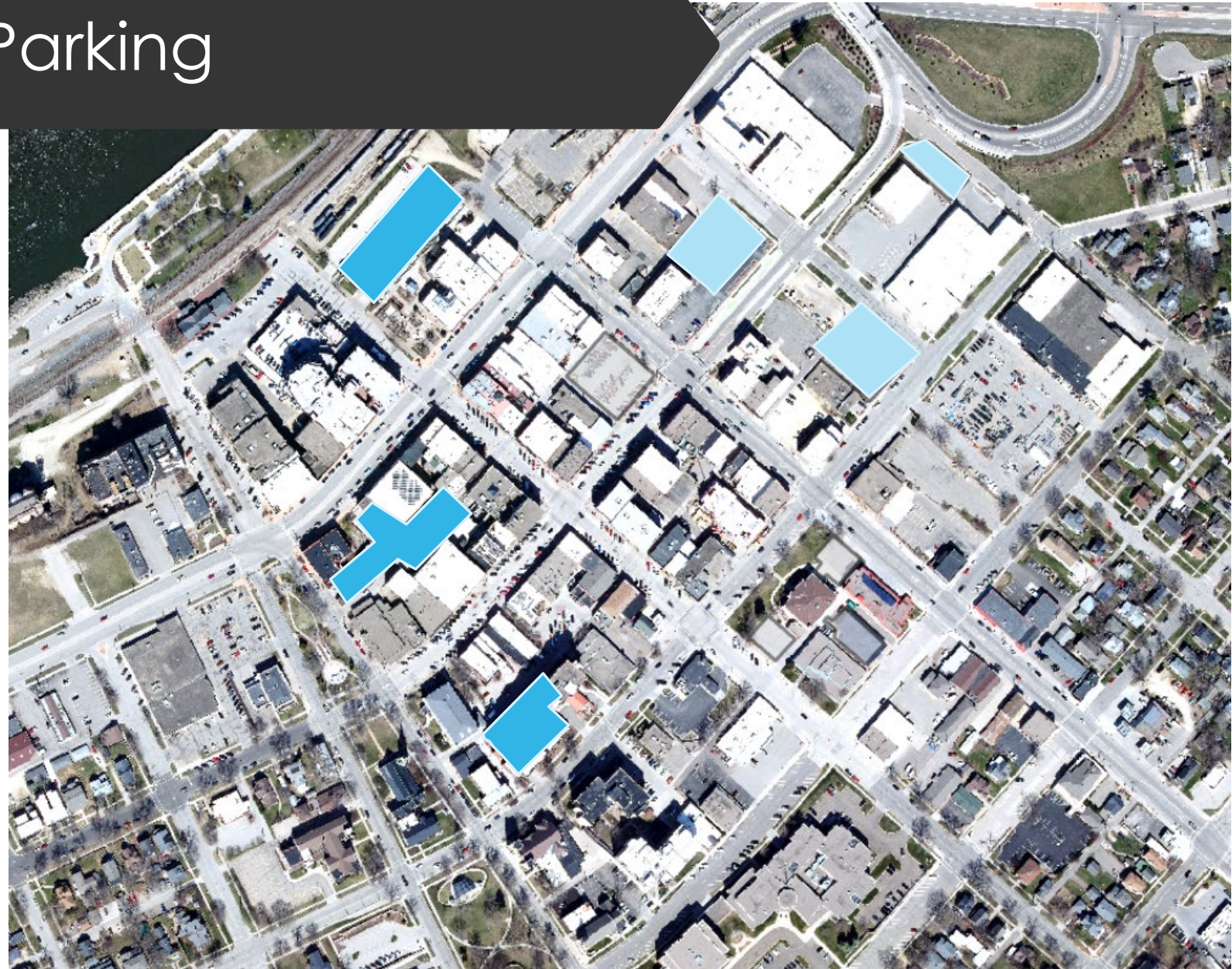
## Parking Ramps

Annual Rate	\$500.00
Monthly	\$50.00
Daily	\$6.00

## City Parking Lots

Annual Rate	\$200.00
Monthly Rate	\$20.00
Daily Rate	\$6.00

Overnight parking is available in these locations without a permit during a snow emergency

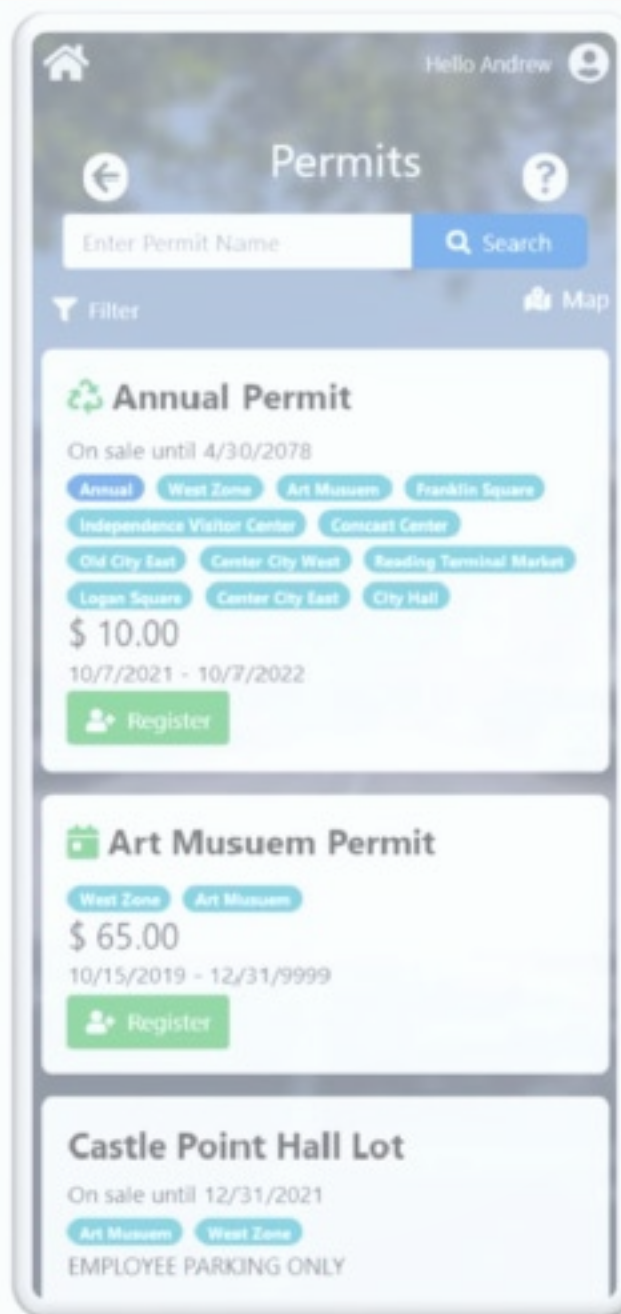


# Ramp Maintenance Costs

<b>Description</b>	<b>10-Year Cost - 2018-2027</b>
LaGrange	\$596,660
Plaza	\$420,660
Studebaker	\$285,160
<b>Total</b>	<b>\$1,302,480</b>
<b>10-Year Average</b>	<b>\$130,248</b>

# Permitting and Enforcement

- ▶ Online system for purchasing permits and paying parking tickets
- ▶ Vehicle recognition software will improve enforcement efforts

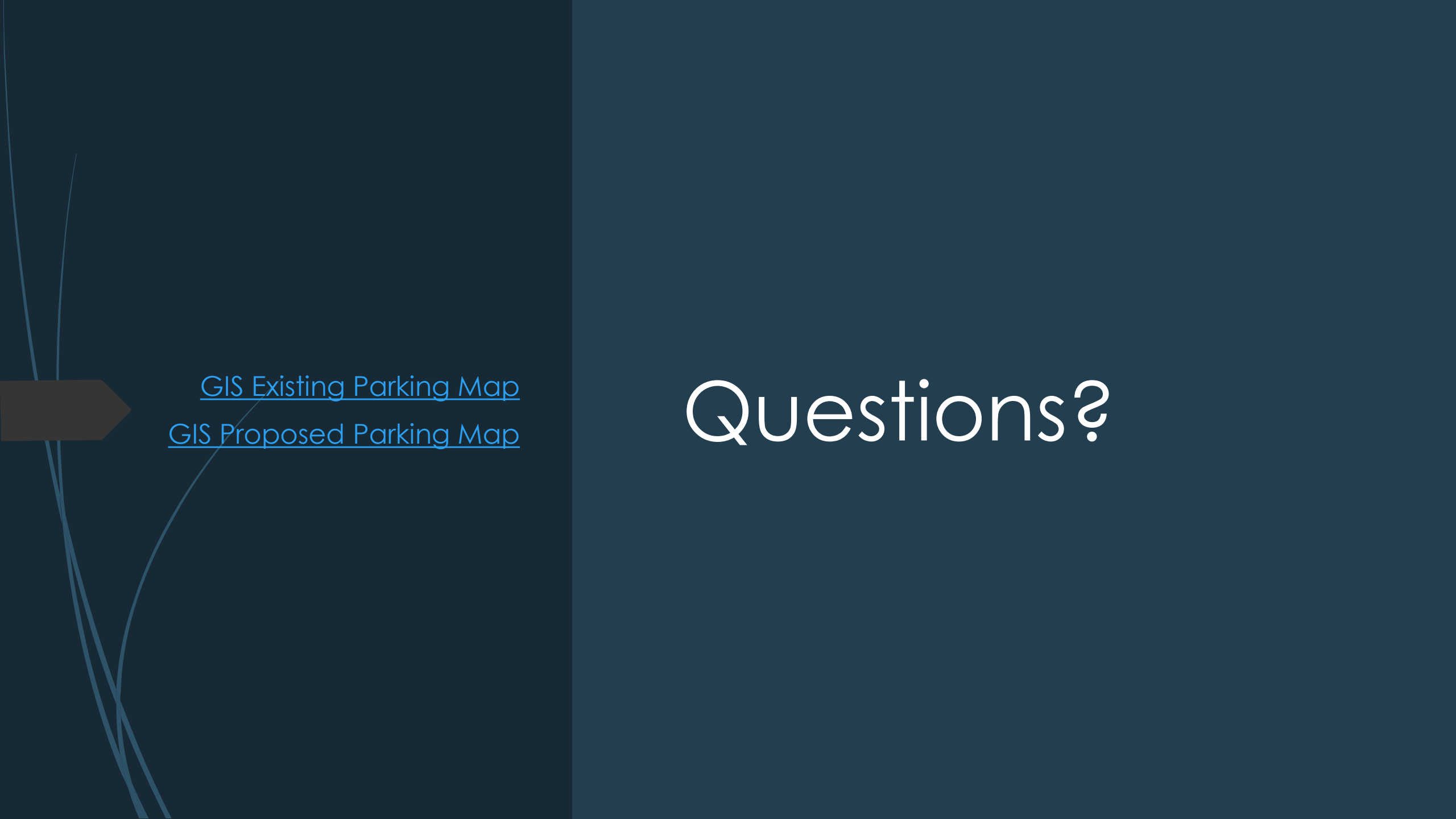


# Wayfinding Signs

- ▶ Create consistent design and naming for parking facilities
- ▶ Better communicate where to find public parking







[GIS Existing Parking Map](#)  
[GIS Proposed Parking Map](#)

# Questions?