



Parking Plan

Approved: May 2024

West End District

Parking Plan Purpose

- ▶ Create an organized, rational, and fair approach to parking.
- ▶ Respond to redevelopment and new housing.
- ▶ Goals:
 - ▶ Be flexible and responsive to changing needs as the city grows.
 - ▶ Be consistent and follow best practice.
 - ▶ Be realistic and practical to implement.
 - ▶ Be clear and easy to interpret and enforce.
 - ▶ Maximize existing parking without increasing the number of spaces.

Changes in the West End



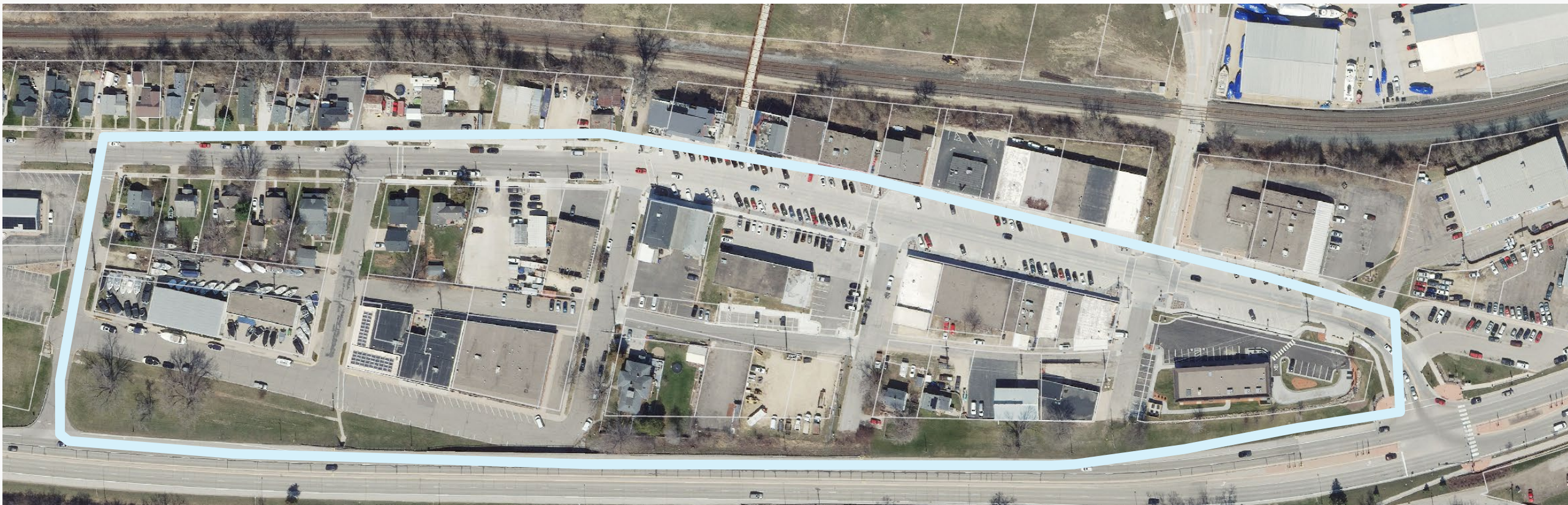
- | | |
|------|---|
| 2019 | 2040 Community Plan outlines West End redevelopment plan |
| 2019 | City purchases former Bauer Built site |
| 2021 | West End Master Plan (Bauer Built Area) |
| 2022 | Street and streetscape renovations completed |
| 2023 | Parking requirements eliminated |
| 2024 | Parking plan approved |
| 2025 | Ongoing considerations for future use of Bauer Built building |

Plan Recommendations

- ▶ Universal 3-hour parking
 - ▶ Allows businesses higher parking turnover rate for their customers
 - ▶ Encourages employees and people who park for many hours to park in off-street parking lots
- ▶ 15-min spaces
 - ▶ Ensures consistent, logical placement
 - ▶ Provides people with options for quick trips
- ▶ Accessible spaces
 - ▶ Additional spaces may be provided by request
 - ▶ ADA-compliant locations prioritized
- ▶ Require permits for overnight parking in lots and ramps
- ▶ Enforce parking rules



West End Parking District



Existing Inventory

West End Parking District

153	20-hour on-street
6	15-min on-street
3	Accessible
48	West End lot
210	Total

Not including approx. 32 Stalls on Side Streets (Jackson and Washington)

Full Implementation

3-hour



Partial Implementation – Option 1

3-hour



Partial Implementation – Option 2



West End Parking District

	Existing Conditions	Full Implementation	Partial I Option 1	Partial Option 2
20-hour on-street	153	59	110	149
3-hour on-street	0	90	39	0
15-min. on-street	6	10	10	10
Accessible	3	3	3	3
West End Lot	48	48	48	48
Total	210	210	210	210



[GIS Parking Map Link](#)

Questions?