

Discussion on a Potential New Red Wing

Public Safety Facility



Overview

01

Why is Red Wing considering a new station?

02

Options Being Discussed

03

Potential Costs

04

Site Selection & Location

05

Possible Timeline

06

Discussion



Why is Red Wing looking at a New Public Safety Facility?



Rent is Increasing Substantially

- Goodhue County owns the building. The City rents space for its Police Department.
- The City's long-time annual lease amount of \$155,000 ended in 2023.
- Goodhue County is increasing its annual rent substantially.
- City had to pay \$267,600 in 2024. By 2026, rent will cost \$363,000.
- After 2026, rent will continue to increase each year.



The City and County Need More Space

- A space study found the current facility needs at least 23% more space for both departments to remain there.
- The 23% does not account for the City and County's projected future space needs for additional vehicles, garages, and storage.



The Police Department Needs More Space

Space Study Found Lack of Space in Specific Areas

- Office Space for Staff
 - Locker Rooms, Fitness Rooms, Break Areas
 - Nursing Rooms, Sleeping Spaces, Mental Health Areas
- Evidence and Storage Rooms
- Training Rooms

The City Lost Space It Previously Shared with County

- The County offered the City a choice to pay an extra \$25,000 or forfeit some shared space.
- Shared space lost included an interview room, meeting room, major cases room, and a storage room.



Goal #1: Create a Place Centered on our Community and Victims of Crime

What People Need from a Police Station

- A space designed and operated for the needs and comfort of victims of crime or trauma.
- Minimizes potential re-traumatization and promotes a sense of control.
- Offers private waiting areas and amenities for victims and children
- Prioritizes safety, privacy, and well-being



Goal #2: Create a Place That Supports and Invests in Our Officers

- **Community Safety:** Officers work more effectively when they are physically and mentally healthy.
- **Public Trust and Engagement:** Officers engage more positively with residents when they feel supported and valued.
- **Mental Health and Decision-Making:** Officers make sound decisions in high-pressure situations when they have mental health support.
- **Retention and Recruitment:** Taking care of officers improves job satisfaction and morale, leading to lower turnover rates.



Goal #3: Create a Place Where Red Wing Has A Unique Identity

Space is currently owned and viewed as Goodhue County – not Red Wing.

- **A Stronger Community Presence:** Residents will know where the RWPD is and feel welcome there.
- **A Positive Environment:** RWPD staff will have a sense of identity and belonging. Officers will want to come here and stay here to work.



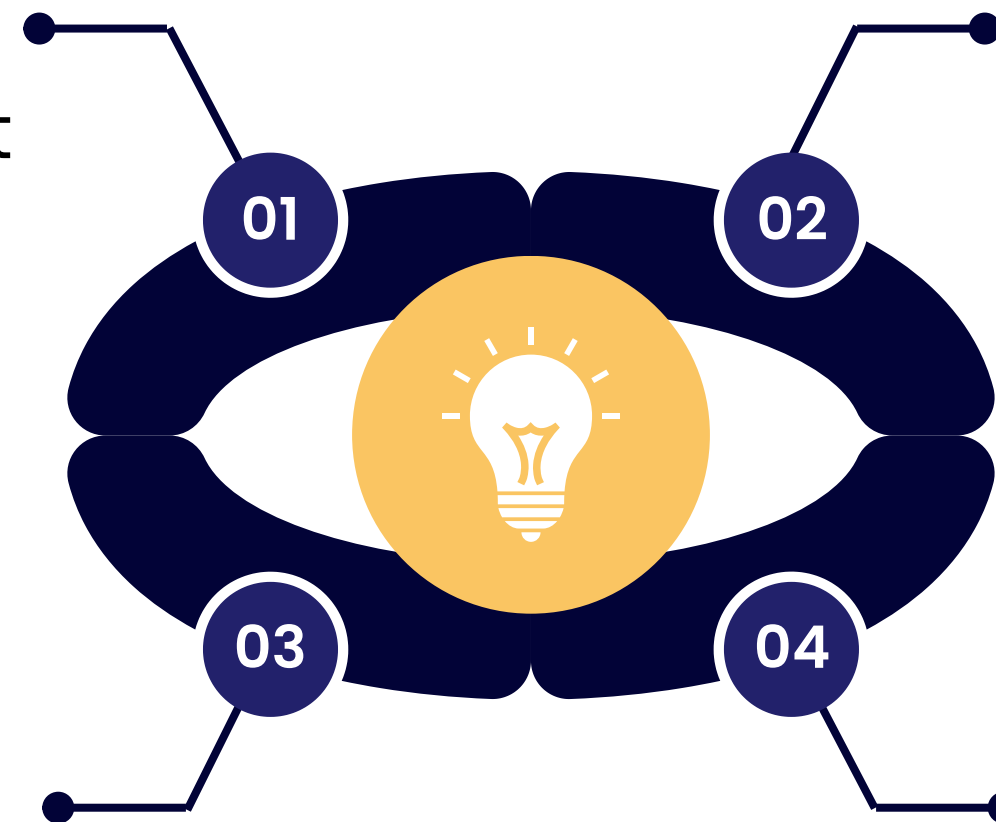
Facility Options Being Discussed

Build onto the current Law Enforcement Center.

Reconfigure the current space, and continue a joint operation with Goodhue County.

Build a new combined facility for Public Safety and Public Works

on a parcel selected by the City Council.



Build a new Public Safety Facility on a parcel selected by the City Council.

Reconfigure the space in the current Law Enforcement Center to get by for the next five years.



Options and Potential Costs



**New Red Wing
Police Facility**

\$24 to \$28 Million



**New Police &
Public Works
Combined Facility**

\$85 Million



**Renovate & Add
onto Current Facility**

Unknown \$\$\$\$

The firms BKV and Krause Anderson were hired to consult and help explore options.



One Choice: Renovate & Add Onto Current Facility

What Might Be Necessary Steps With This Option?

- Remove or relocate the current parking lot.
- Close West 6th Street and build on that space.
- Remove houses along West 6th Street to make room.
- Could potentially be more money over time than a new building.



Why Does a Police Station Cost So Much?

- Police Stations must be places that can withstand natural and non-natural disasters.
- Police Stations must include specialized equipment and areas, such as interview rooms, evidence storage, training areas, etc.



Ways to Lower the Cost

01

Apply for State Grants

02

Apply for Federal Grants

03

**Decrease the building's footprint.
Cut areas of the projected building plan.**

04

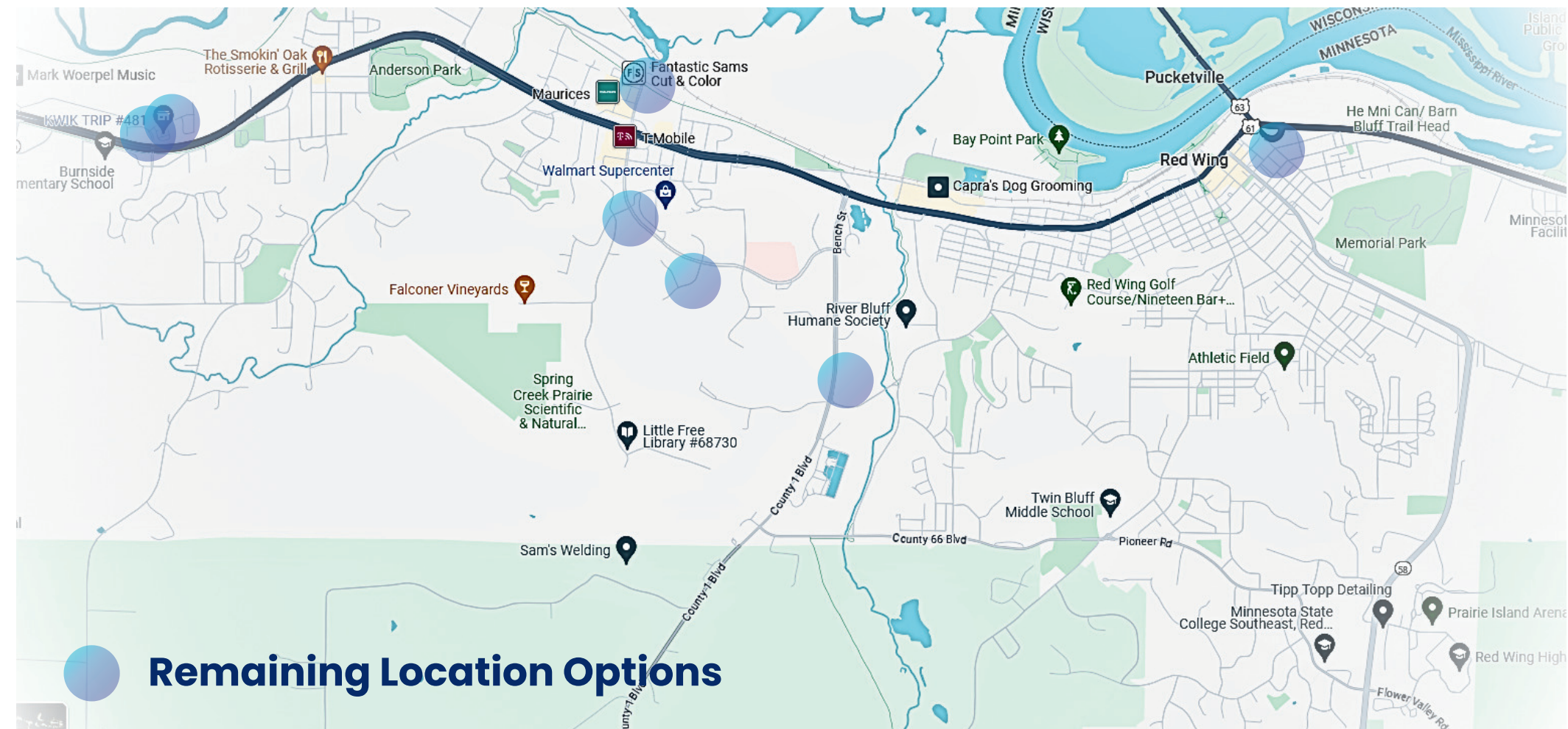
Make decisions soon to avoid rising costs



Site Selection

What Areas Have Been Considered?

- Multiple sites were originally considered including the use of other buildings.
- 7 sites were reviewed and scored.
- Each site was scored on a wide range of criteria.



Scoring Criteria

Positive Scoring Criteria Examples

- Enough space for expansion
- Accessible from multiple streets & sidewalks
- Accessible to necessary utilities
- Protected from natural disasters
- Opportunity for positive community impact

Negative Scoring Criteria Examples

- Hazardous materials have been used on the site
- Potentially near Indigenous burial sites
- Negatively impacts economic strength of the community



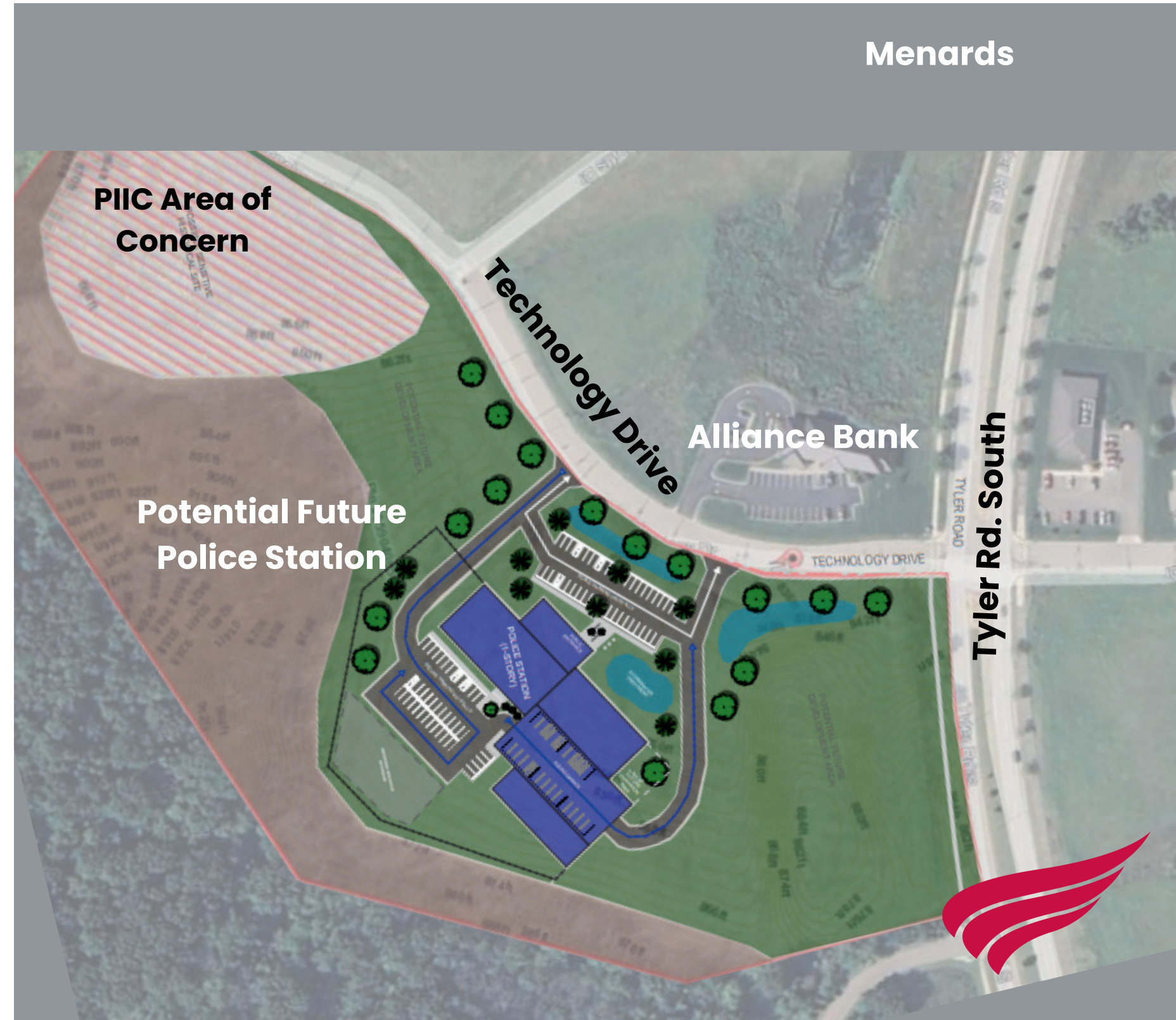
Scoring Results

- **#1: Tyler Road South & Technology Drive: 178 points / 17 acres**
- **#2: Next to Fire Station 2 in Upper Burnside: 138 points / 25 acres**
- **#3: Next to Public Works Building Behind Target: 135 points / 8 acres**
- **#4: Corner of Kosec Dr. & Tyler Road South: 130 points / 8 acres**
(Across from Walmart Entrance)
- **#5: 321 Bluff Street: 108 points / 2 acres**
(By the Eisenhower Bridge where Dakota Mural is located)
- **#6: Corner of Featherstone Road & Bench Street: 105 points / 28 acres**
- **#7: Highwoods Trail: 90 points / 10 acres**
(Near Kwik Trip in Upper Burnside)



Location for Potential New Station

Tyler Road South and Technology Drive



Steps Happening Now



Learning more about the costs for remodeling existing Law Enforcement Center.



Gathering City Council feedback at the Council's annual workshop in February.



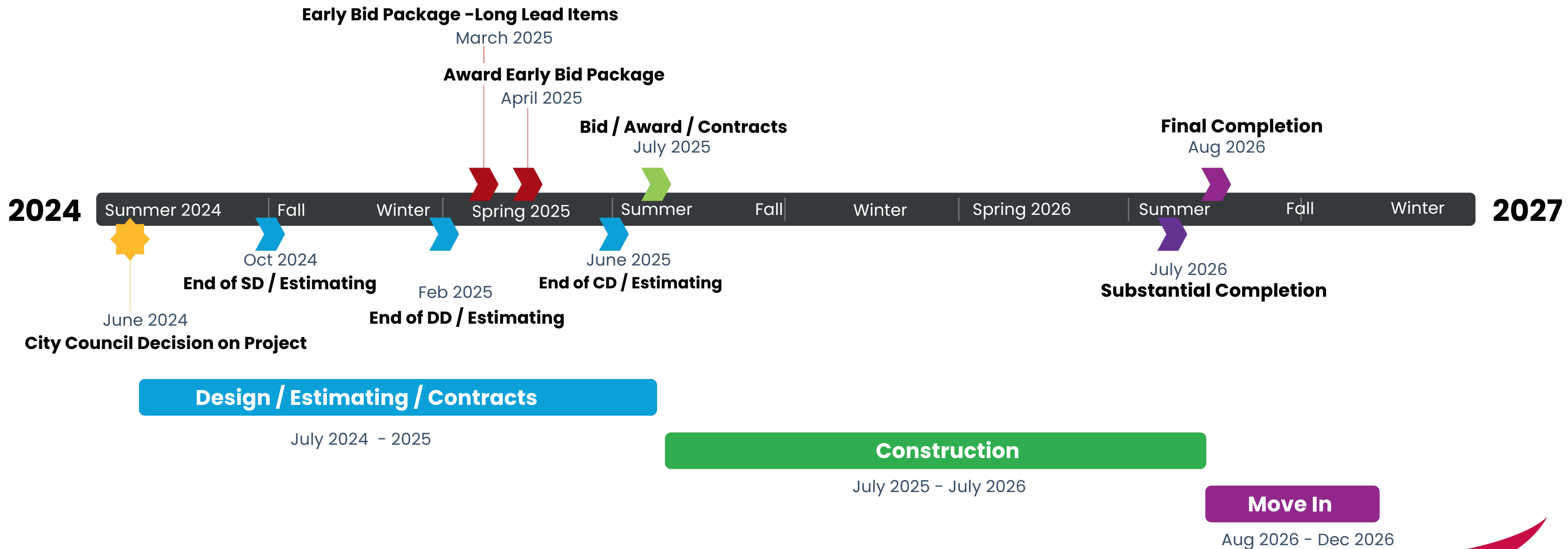
City's Ad-Hoc Committee is meeting - sometimes with the County's committee.



Educating, listening, and gathering feedback from the public.



Possible Schedule for Construction



Discussion



Thank You

