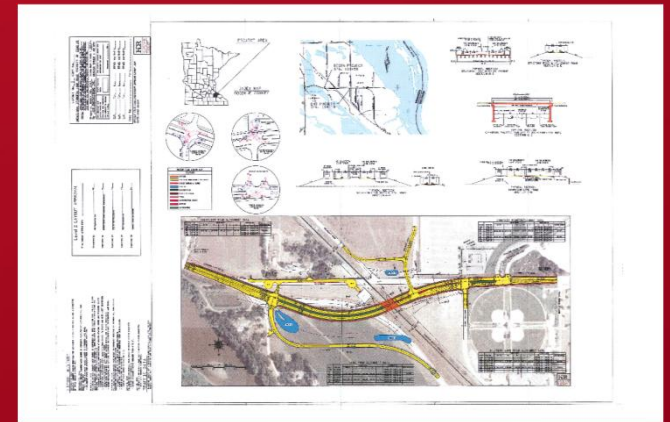




Sturgeon Lake Road/ CP Rail Intersection

Community Meeting and
Environmental Assessment Public Hearing



Presentation at 5:00pm

December 10, 2013

Agenda

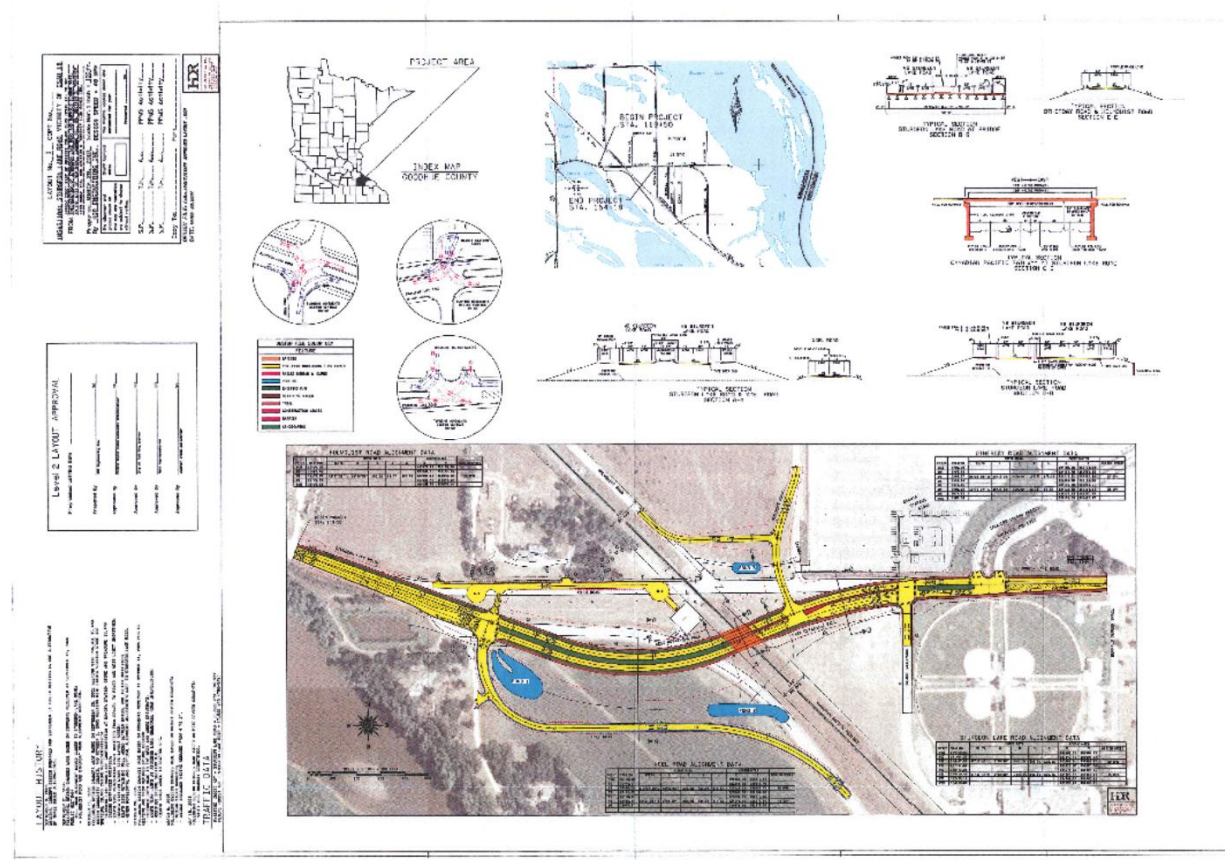
- Purpose and Need
- Project Background
- Current Study
- Next Steps
- General Project Questions
- Environmental Document Public Hearing
- Community Meeting Continues to 6:30pm

Purpose and Need

- Reduce traffic delay caused by rail traffic
- Reduce vehicle / train crash exposure
- Improve emergency vehicle response time
- Remove impact during train blockage
- Maintain (or improve) access to adjacent properties

Project Background

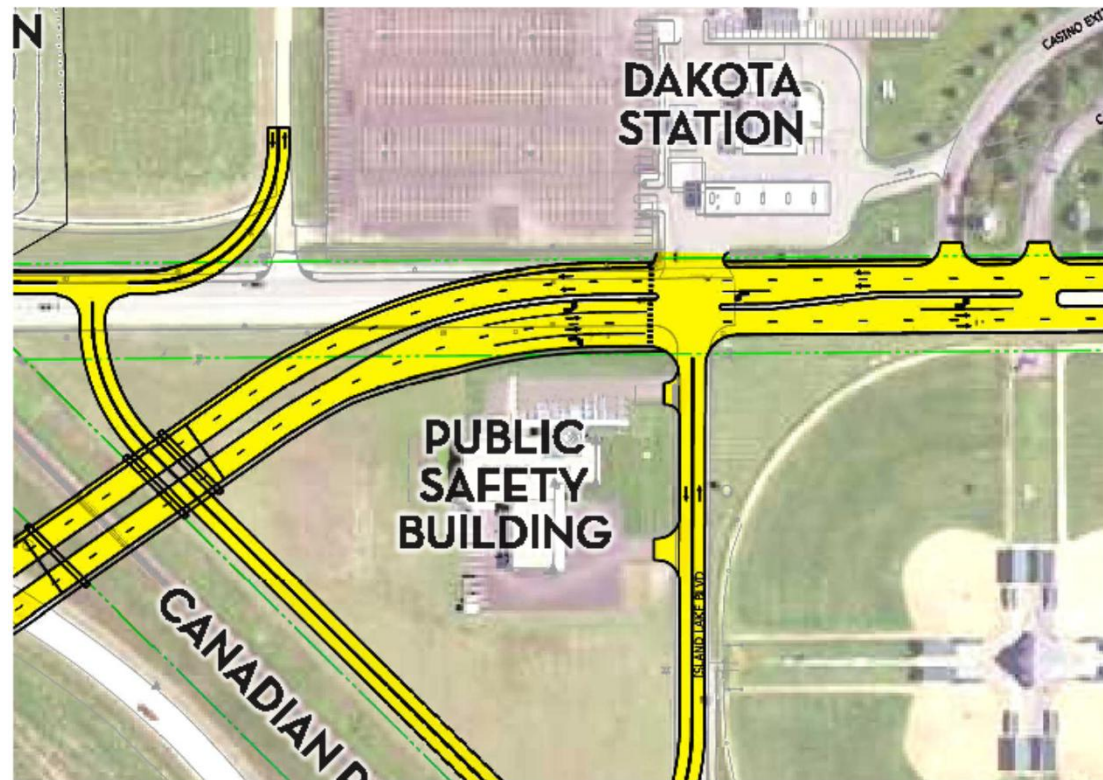
- 2005 - 2007 Sturgeon Lake Road Study
- Approved EA in 2007
- Project “on hold” from 2007 - 2010



Current Study

- Respond to changes in the corridor since 2007

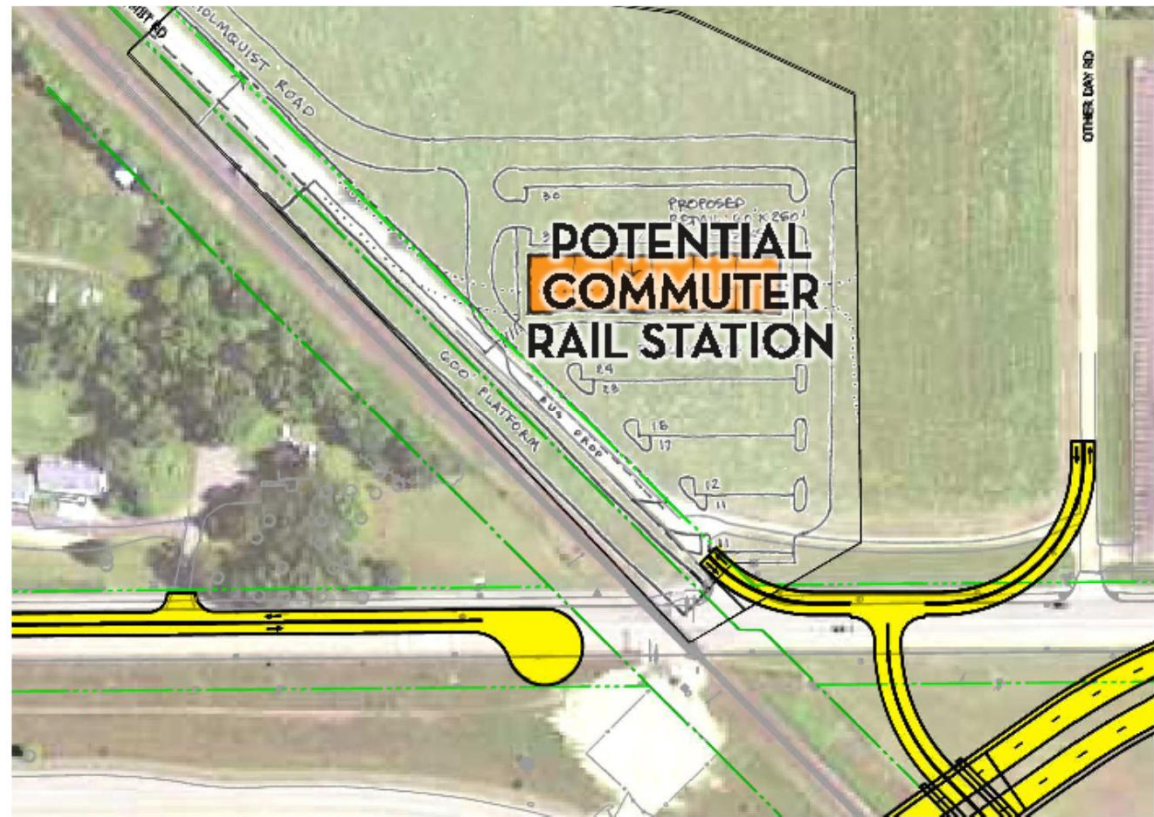
- New PIIC
Public Safety
Building



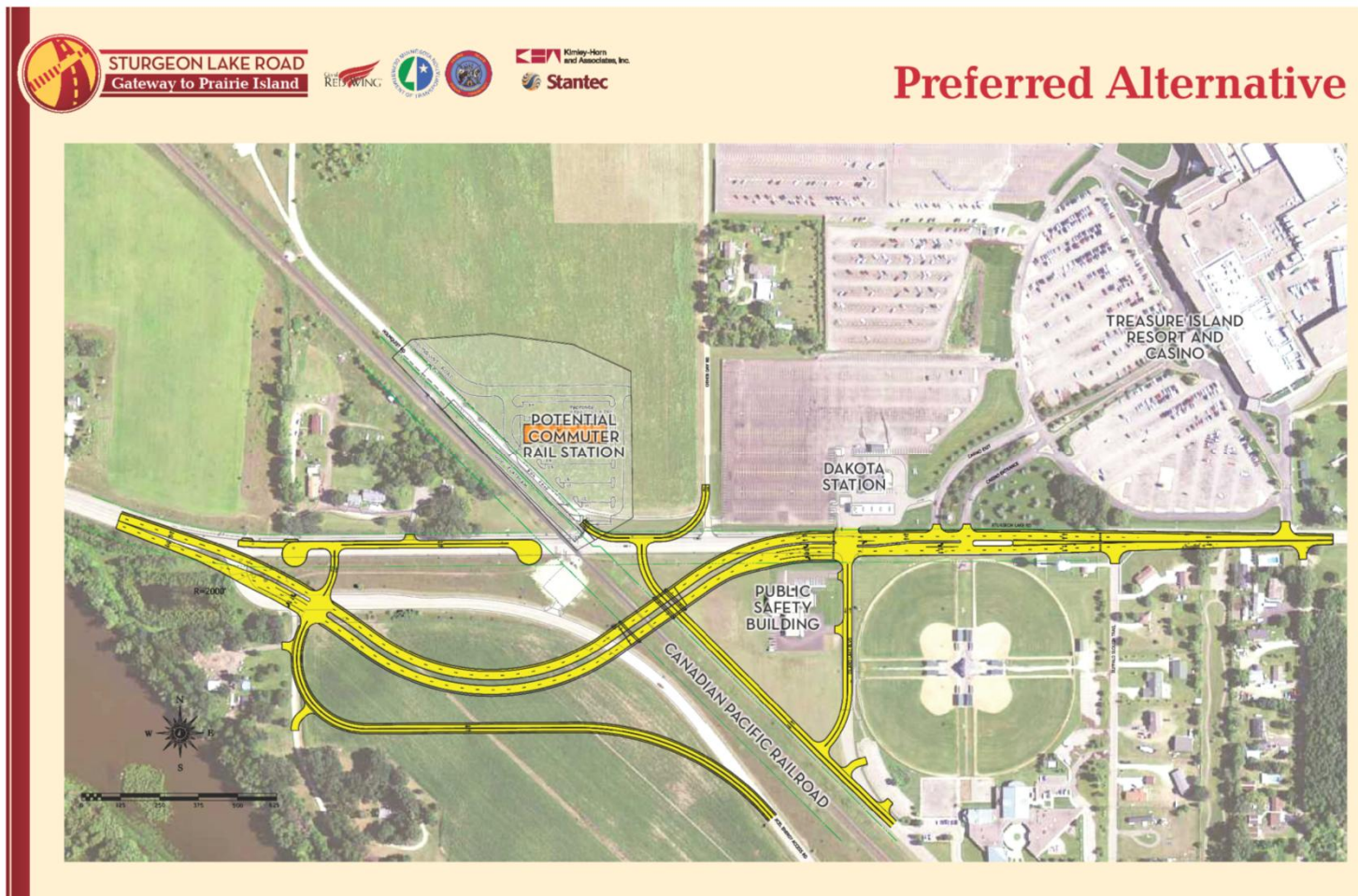
Current Study

- Respond to changes in the corridor since 2007

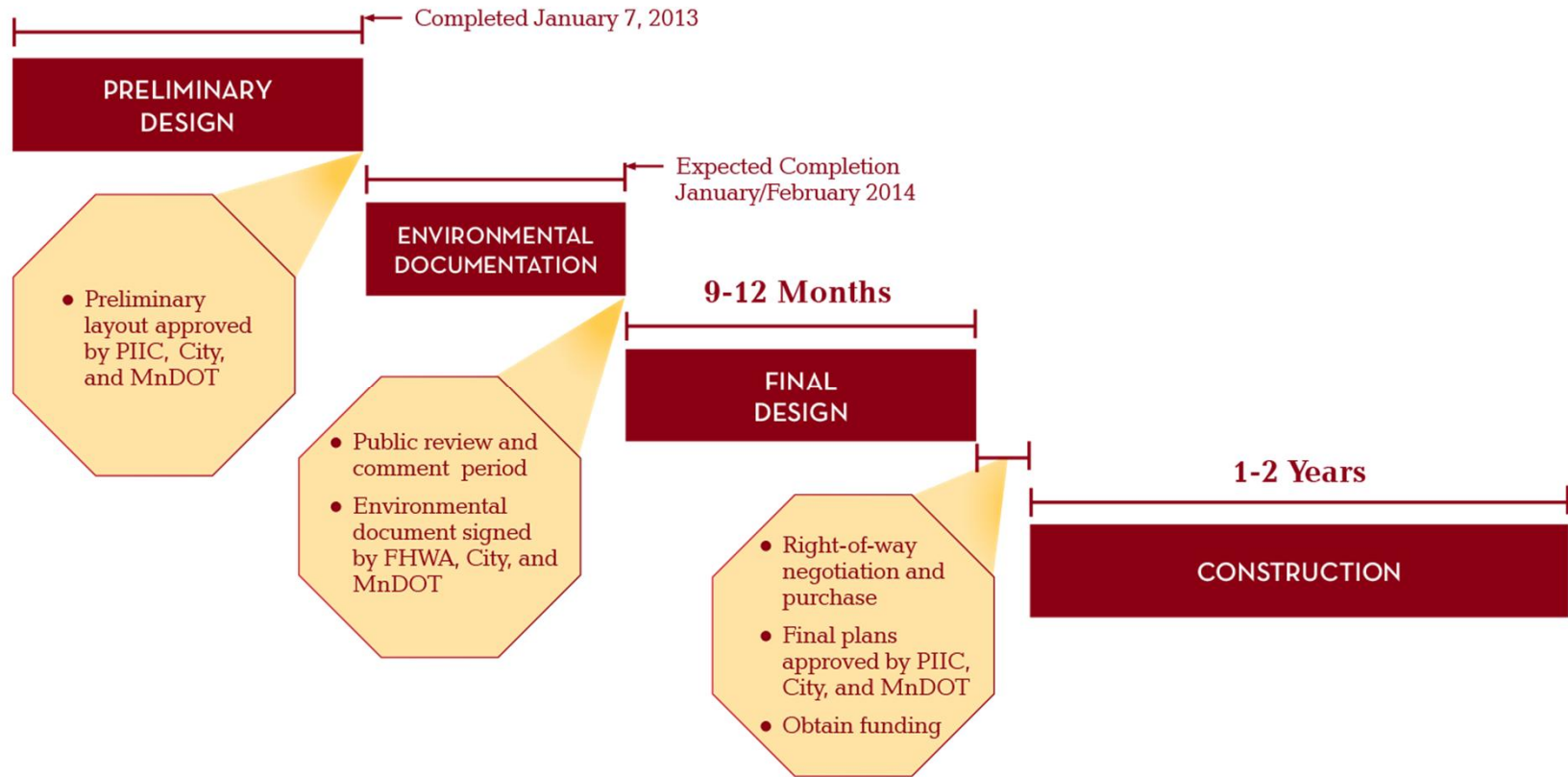
- Future Rail Station Location Study



Current Study



Project Consent Milestones



Environmental Assessment Update

- Environmental Assessment (EA)
 - Federal process under National Environmental Policy Act (NEPA)
 - Required for use of federal funding
 - Public comment
- Environmental Assessment Worksheet (EAW)
 - State process
 - Discretionary – not required

Environmental Impact Analysis

(Items in red changed since 2007 EA)

- Parks
- Historic resources
- Wildlife
- Right-of-Way
- Hazardous Materials
- Farmland
- Air quality
- Noise
- Floodplains
- Wetlands
- Stormwater
- Environmental Justice

Document Update Process

- Public Comment Period
 - Nov 25 to Dec 26 – written comments
 - Dec 10 public hearing – verbal comments
- Respond to Comments in Final EA
- Federal and State Final Determination
 - Most likely: Finding of No Significant Impact (FONSI)

General Questions?

Environmental Assessment
Public Hearing is Next

Environmental Assessment Public Hearing

Comments made during the public hearing are being transcribed by a court reporter.

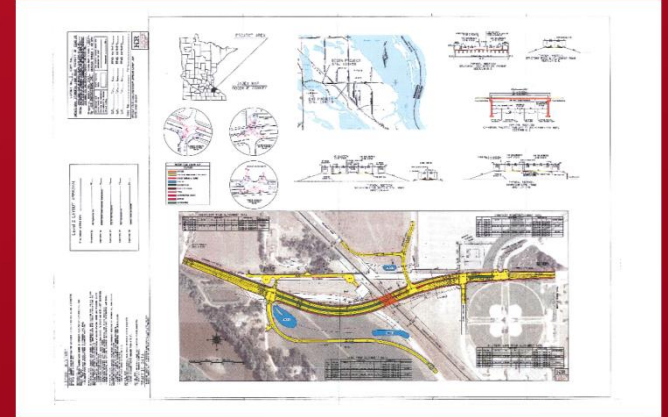
When making comments, please first state your name and your address, then proceed with your comments.

You can also provide comments after the Public Hearing concludes either verbally with the court reporter today or written by December 26th.



Sturgeon Lake Road/ CP Rail Intersection

Community Meeting and
Environmental Assessment Public Hearing



Community Meeting ends at 6:30pm

December 10, 2013

